

# A continuum from clear to cloudy hot-Jupiter exoplanets without primordial water depletion

David K. Sing<sup>1</sup>, Jonathan J. Fortney<sup>2</sup>, Nikolay Nikolov<sup>1</sup>, Hannah R. Wakeford<sup>1</sup>, Tiffany Kataria<sup>1</sup>, Thomas M. Evans<sup>1</sup>, Suzanne Aigrain<sup>3</sup>, Gilda E. Ballester<sup>4</sup>, Adam S. Burrows<sup>5</sup>, Drake Deming<sup>6</sup>, Jean-Michel Désert<sup>7</sup>, Neale P. Gibson<sup>8</sup>, Gregory W. Henry<sup>9</sup>, Catherine M. Huitson<sup>7</sup>, Heather A. Knutson<sup>10</sup>, Alain Lecavelier des Etangs<sup>11</sup>, Frederic Pont<sup>1</sup>, Adam P. Showman<sup>4</sup>, Alfred Vidal-Madjar<sup>11</sup>, Michael H. Williamson<sup>9</sup> & Paul A. Wilson<sup>11</sup>

**Thousands of transiting exoplanets have been discovered, but spectral analysis of their atmospheres has so far been dominated by a small number of exoplanets and data spanning relatively narrow wavelength ranges (such as 1.1–1.7 micrometres). Recent studies show that some hot-Jupiter exoplanets have much weaker water absorption features in their near-infrared spectra than predicted<sup>1–5</sup>. The low amplitude of water signatures could be explained by very low water abundances<sup>6–8</sup>, which may be a sign that water was depleted in the protoplanetary disk at the planet's formation location<sup>9</sup>, but it is unclear whether this level of depletion can actually occur. Alternatively, these weak signals could be the result of obscuration by clouds or hazes<sup>1–4</sup>, as found in some optical spectra<sup>3,4,10,11</sup>. Here we report results from a comparative study of ten hot Jupiters covering the wavelength range 0.3–5 micrometres, which allows us to resolve both the optical scattering and infrared molecular absorption spectroscopically. Our results reveal a diverse group of hot Jupiters that exhibit a continuum from clear to cloudy atmospheres. We find that the difference between the planetary radius measured at optical and infrared wavelengths is an effective metric for distinguishing different atmosphere types. The difference correlates with the spectral strength of water, so that strong water absorption lines are seen in clear-atmosphere planets and the weakest features are associated with clouds and hazes. This result strongly suggests that primordial water depletion during formation is unlikely and that clouds and hazes are the cause of weaker spectral signatures.**

We observed the transits of eight hot Jupiters as part of a spectral survey of exoplanet atmospheres with the Hubble Space Telescope (HST). The eight planets covered in our survey (WASP-6b, WASP-12b, WASP-17b, WASP-19b, WASP-31b, WASP-39b, HAT-P-1b and HAT-P-12b) span a large range of planetary temperature, surface gravity, mass and radii, allowing for an exploration of hot-Jupiter atmospheres across a broad range of physical parameters (see Table 1). In this survey, we observed all eight planets in the full optical wavelength range (0.3–1.01  $\mu\text{m}$ ) using the Space Telescope Imaging Spectrograph (STIS) instrument. We also used the Wide Field Camera 3 (WFC3) instrument to observe transits of WASP-31b and HAT-P-1b in the near-infrared (1.1–1.7  $\mu\text{m}$ ), and used additional WFC3 programmes to observe transits of four other survey targets (WASP-12b, WASP-17b, WASP-19b and HAT-P-12b). The HST survey was complemented by photometric transit observations of all eight targets at 3.6  $\mu\text{m}$  and 4.5  $\mu\text{m}$  using the Spitzer Space Telescope Infrared Array Camera (IRAC) instrument. We analysed the survey targets in conjunction with HST and Spitzer data from the two best-studied hot Jupiters to

date, HD 209458b (ref. 1) and HD 189733b (ref. 5), giving a total of ten exoplanets in our comparative study with transmission spectra between 0.3  $\mu\text{m}$  and 5  $\mu\text{m}$  (see Extended Data Table 1 for a detailed list of the observations).

Our data reduction methods followed those in our previous studies<sup>3,4,11–14</sup>, in which the transmission spectra of WASP-19b, WASP-12b, HAT-P-1b, WASP-6b and WASP-31b were presented (see Methods for further details). The transit light curves<sup>15</sup> of the band-integrated spectra were fitted simultaneously with detector systematics, with all HST and Spitzer transit data used to determine the planets' orbital system parameters (inclination, stellar density and transit ephemeris), which were then fixed to the weighted mean values in the subsequent analysis measuring the transmission spectra. To create the broadband transmission spectrum, we extracted various wavelength bins for the HST STIS and WFC3 spectra and separately fitted each bin for the planet-to-star radius ratio  $R_p/R_*$  and detector systematics. The uncertainties for each data point were rescaled, based on the standard deviation of the residuals, and any systematic errors correlated in time were measured using the binned residuals<sup>16</sup>.

The resulting transmission spectra are shown in Fig. 1 and exhibit a variety of spectral absorption features due to Na, K and H<sub>2</sub>O, as well as strong optical scattering slopes (for example, WASP-6b and HAT-P-12b). Planets such as WASP-39b show prominent alkali absorption lines with pressure-broadened wings, whereas other planets such as WASP-31b show strong but narrow alkali features, which implies that these planets are limited to lower atmospheric pressures. H<sub>2</sub>O vapour has been predicted to be an important source of opacity for hot-Jupiter atmospheres<sup>17–19</sup>, and it is detected in five of the eight exoplanets where WFC3 spectra are available<sup>1–5,13,14</sup>. However, the amplitude of the H<sub>2</sub>O absorption varies greatly across the ten planets, ranging from features that are very pronounced (as in WASP-19b)<sup>14</sup> to those that are much smaller than expected (HD 209458b)<sup>1</sup> or even absent (WASP-31b)<sup>4</sup>.

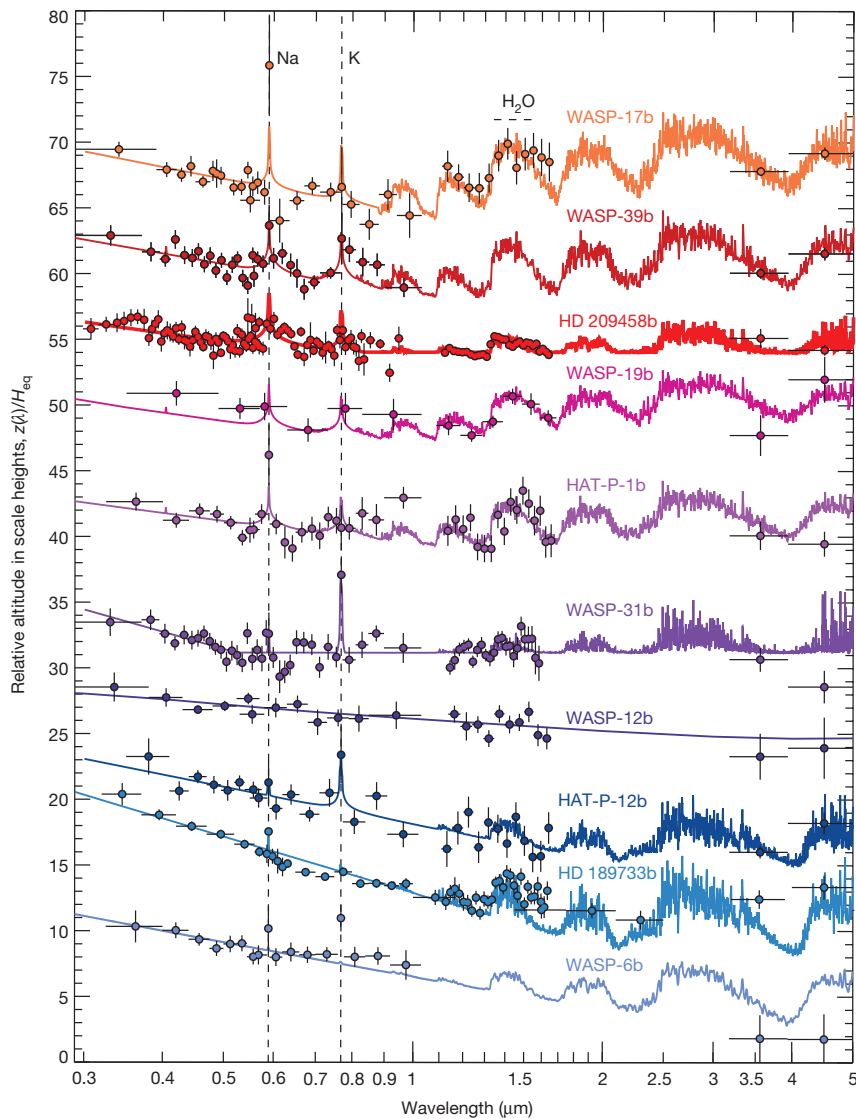
Previous studies using HST/WFC3 spectra have shown that HD 209458b, HD 189733b and WASP-12b have low-amplitude water features<sup>1,3,5</sup>, which can be attributed to a severe depletion of atmospheric H<sub>2</sub>O abundance relative to solar values<sup>6–8</sup>. Any such depletion would be a remnant of planet formation, as H<sub>2</sub>O is expected to be well mixed in a hot atmosphere, such that currently measured molecular abundances would be consistent with primordial values. The depletion of water vapour can occur beyond a protoplanetary disk's snow line<sup>9</sup>, where water is found predominantly as solid ice. Therefore, a hot Jupiter with a large depletion in H<sub>2</sub>O gas would imply that the planet formed at large orbital distances beyond the snow line and,

<sup>1</sup>Astrophysics Group, School of Physics, University of Exeter, Stocker Road, Exeter EX4 4QL, UK. <sup>2</sup>Department of Astronomy and Astrophysics, University of California, Santa Cruz, California 95064, USA. <sup>3</sup>Department of Physics, University of Oxford, Keble Road, Oxford OX1 3RH, UK. <sup>4</sup>Lunar and Planetary Laboratory, University of Arizona, Tucson, Arizona 85721, USA. <sup>5</sup>Department of Astrophysical Sciences, Peyton Hall, Princeton University, Princeton, New Jersey 08544, USA. <sup>6</sup>Department of Astronomy, University of Maryland, College Park, Maryland 20742, USA. <sup>7</sup>Department of Astrophysical and Planetary Sciences, University of Colorado, Boulder, Colorado 80309, USA. <sup>8</sup>European Southern Observatory, Karl-Schwarzschild-Strasse 2, D-85748 Garching bei München, Germany. <sup>9</sup>Center of Excellence in Information Systems, Tennessee State University, Nashville, Tennessee 37209, USA. <sup>10</sup>Division of Geological and Planetary Sciences, California Institute of Technology, Pasadena, California 91125, USA. <sup>11</sup>CNRS, Institut d'Astrophysique de Paris, UMR 7095, 98 bis boulevard Arago, 75014 Paris, France.

**Table 1 | Physical parameters of hot Jupiters and associated spectral results**

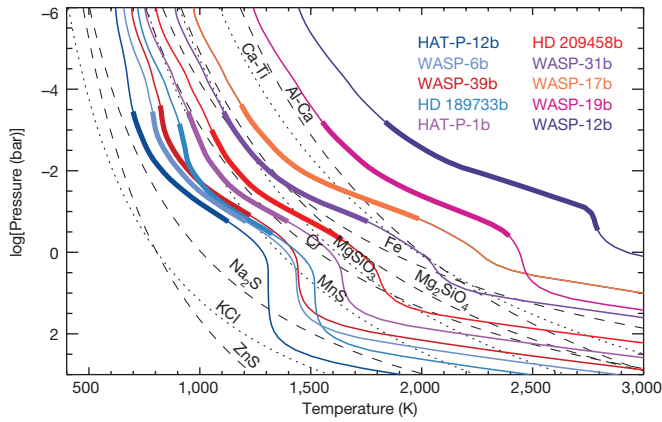
Name	$T_{\text{eq}}$ (K)	$g$ ( $\text{m s}^{-2}$ )	$R_p$ ( $R_J$ )	$M_p$ ( $M_J$ )	$P$ (days)	$\log R'_{\text{HK}}$	$\Delta Z_{\text{UB-LM}}/H_{\text{eq}}$	$\Delta Z_{\text{J-LM}}/H_{\text{eq}}$	$\text{H}_2\text{O}$ amplitude (%)	Features	Reference
WASP-17b	1,740	3.6	1.89	0.51	3.73	-5.531	$-0.80 \pm 0.36$	$-1.48 \pm 0.71$	$94 \pm 29$	Na, $\text{H}_2\text{O}$	
WASP-39b	1,120	4.1	1.27	0.28	4.06	-4.994	$0.10 \pm 0.41$			Na, K	
HD 209458b	1,450	9.4	1.36	0.69	3.52	-4.970	$0.73 \pm 0.36$	$-0.49 \pm 0.36$	$32 \pm 5$	Aer, Na, $\text{H}_2\text{O}$	
WASP-19b	2,050	14.2	1.41	1.14	0.79	-4.660	$1.04 \pm 1.79$	$-1.97 \pm 1.32$	$105 \pm 20$	$\text{H}_2\text{O}$	14
HAT-P-1b	1,320	7.5	1.32	0.53	4.46	-4.984	$2.01 \pm 0.81$	$0.19 \pm 0.93$	$68 \pm 19$	Na, $\text{H}_2\text{O}$	12, 13
WASP-31b	1,580	4.6	1.55	0.48	3.40	-5.225	$2.15 \pm 0.77$	$1.25 \pm 0.77$	$31 \pm 12$	Aer, K	4
WASP-12b	2,510	11.6	1.73	1.40	1.09	-5.500	$3.76 \pm 1.59$	$1.65 \pm 1.47$	$38 \pm 34$	Aer	3
HAT-P-12b	960	5.6	0.96	0.21	3.21	-5.104	$4.14 \pm 0.77$	$1.37 \pm 0.79$	$17 \pm 23$	Aer, K	
HD 189733b	1,200	21.4	1.14	1.14	2.22	-4.501	$5.52 \pm 0.50$	$-0.56 \pm 0.50$	$53.6 \pm 9.6$	Aer, Na, $\text{H}_2\text{O}$	5, 10
WASP-6b	1,150	8.7	1.22	0.50	3.36	-4.741	$8.49 \pm 1.33$			Aer, K	11

The listed physical parameters are based on data compiled from our HST and Spitzer results<sup>3,4,10-14</sup> and online databases. Sources for published spectral results are also listed. Atmospheric features detected of cloud or haze aerosols, sodium, potassium and water are listed (Aer, Na, K and  $\text{H}_2\text{O}$ , respectively). The equilibrium temperature  $T_{\text{eq}}$  assumes zero albedo and uniform redistribution. Also listed are the surface gravity,  $g$ ; radius of the planet,  $R_p$ ; planet mass,  $M_p$ ; orbital period,  $P$ ; and Ca II H and K stellar activity index  $\log R'_{\text{HK}}$ .  $R_J$  is the radius of Jupiter and  $M_J$  is the mass of Jupiter.  $\Delta Z_{\text{UB-LM}}/H_{\text{eq}}$  gives the difference in pressure scale heights between the optical and mid-infrared transmission spectra, while  $\Delta Z_{\text{J-LM}}/H_{\text{eq}}$  is the difference between the near- and mid-infrared (see Methods). The atmospheric scale height,  $H_{\text{eq}} = kT_{\text{eq}}/(\mu g)$ , is estimated using the planet-specific equilibrium temperature and assuming a H/He atmosphere with a mean molecular mass of  $\mu = 2.3$  atomic mass units. The  $\text{H}_2\text{O}$  amplitude is measured using the WFC3 data, taking the average radii from  $1.34 \mu\text{m}$  to  $1.49 \mu\text{m}$  and subtracting it from the average value between  $1.22 \mu\text{m}$  to  $1.33 \mu\text{m}$ , then dividing that value by the theoretical difference as calculated by models<sup>16</sup> assuming clear atmospheres and solar abundances.



**Figure 1 | HST/Spitzer transmission spectral sequence of hot-Jupiter survey targets.** Solid coloured lines show fitted atmospheric models with prominent spectral features indicated. The spectra have been offset, ordered by values of  $\Delta Z_{\text{UB-LM}}$  (the altitude difference between the blue-optical and mid-infrared; Table 1). Horizontal and vertical error bars indicate the wavelength spectral bin and  $1\sigma$  measurement uncertainties,

respectively. Planets with predominantly clear atmospheres (top) show prominent alkali and  $\text{H}_2\text{O}$  absorption, with infrared radii values commensurate with or higher than the optical altitudes. Very hazy and cloudy planets (bottom) have strong optical scattering slopes, narrow alkali lines and  $\text{H}_2\text{O}$  absorption that is partially or completely obscured.

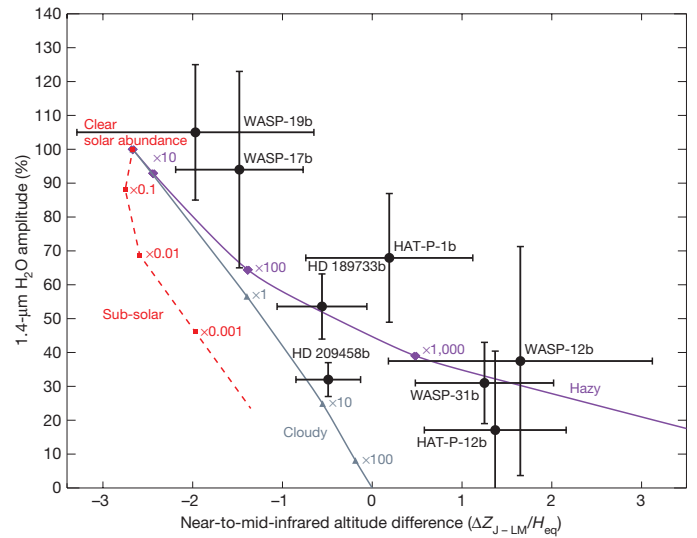


**Figure 2 | Pressure–temperature profiles and condensation curves.** Profiles are calculated for each planet from one-dimensional non-grey radiative transfer models<sup>17</sup>, which assume planet-wide average conditions in chemical equilibrium at solar abundances, and clear atmospheres. Profiles take into account incident stellar fluxes as well as the planetary interior fluxes that are appropriate given each planet’s known mass and radius. Dashed and dotted lines are calculations of condensation curves of chemical species expected to condense in planetary and brown dwarf atmospheres<sup>25</sup>. The thicker portions of the pressure–temperature profiles indicate the pressures probed in transmission.

during its inward orbital migration, avoided accretion and dissolution of icy planetesimals as well as the subsequent accretion of an appreciable amount of H<sub>2</sub>O-rich gas. Such scenarios have been proposed for Jupiter<sup>20,21</sup> based on Galileo probe measurements<sup>22</sup> that indicate it to be a water-poor gas giant, although the measurements were affected by local meteorology<sup>22</sup>.

However, it is possible that these weak water absorption bands could be attributed to cloud opacity, which have yielded featureless transmission spectra for a number of transiting exoplanets<sup>23,24</sup>. For simplicity, we define a cloud as a grey opacity source, and a haze as one that yields a Rayleigh-scattering-like opacity, which could be due to small (sub-micrometre size) particles. Silicate or higher-temperature cloud condensates are expected to dominate the hotter atmospheres, like those observed for brown dwarfs, while in cooler atmospheres sulfur-bearing compounds are expected to play an important part in the condensation chemistry<sup>25,26</sup>. In Fig. 2, we plot model atmospheric pressure–temperature profiles for the planets in our comparative study and compare them to the condensation curves for the expected cloud-forming molecules. The base, or bottom, of a condensate cloud is expected to form where the planetary pressure–temperature profiles cross the condensation curve; in this case, Cr, MnS, MgSiO<sub>3</sub>, Mg<sub>2</sub>SiO<sub>4</sub> and Fe are possible condensates. For example, the spectra of WASP-31b shows clouds<sup>4</sup>, which probably form at pressures of about 10 mbar and can be explained by Fe or MgSiO<sub>4</sub> condensates. However, the curves alone cannot explain cloudy versus cloud-free planets, because hazy planets such as HAT-P-12b and WASP-12b do not cross condensation curves at observable pressures. Therefore, atmospheric circulation must also play a part, as vertical mixing allows for particles to be lofted and maintained at pressures probed in transmission at the terminators. Additionally, equatorial eastward superrotation arising from day–night temperature variations can allow clouds that form on the nightside to be transported to the terminator<sup>27</sup>.

We compare spectral features from our large survey to both analytic<sup>4,26</sup> and radiative-transfer models assuming varying degrees of clouds and hazes<sup>17,18</sup>. In order to evaluate the spectral behaviour of the sample as a whole, we define and measure three broadband spectral indices, which can then be compared to both the observational data and the theoretical models (see Table 1 and Methods). We first define an index  $\Delta Z_{\text{UB-LM}}$  that compares the relative strength of scattering, which is strongest at blue-optical (0.3–0.57  $\mu\text{m}$ ) wavelengths, to that



**Figure 3 | Transmission spectral index diagram of  $\Delta Z_{\text{J-LM}}$  versus H<sub>2</sub>O amplitude.** Black points show the altitude difference between the near-infrared and the mid-infrared spectral features ( $\Delta Z_{\text{J-LM}}$ ) versus the amplitude of the 1.4- $\mu\text{m}$  H<sub>2</sub>O feature for eight of ten targets (see Table 1). Error bars represent the  $1\sigma$  measurement uncertainties. Purple and grey lines show model trends for hazy and cloud atmospheres, respectively, with increasing Rayleigh scattering haze and grey cloud deck opacity corresponding to  $10\times$ ,  $100\times$  and  $1,000\times$  the solar value. We also show clear-atmosphere models with sub-solar abundances of  $0.1\times$ ,  $0.01\times$  and  $0.001\times$  the solar value (red line). WASP-6b and WASP-39b are not included because there are currently no HST WFC3 data for these two planets.

of molecular absorption, which is strongest at mid-infrared (3–5  $\mu\text{m}$ ) wavelengths and dominated by H<sub>2</sub>O, CO and CH<sub>4</sub>. We also define  $\Delta Z_{\text{J-LM}}$  to measure the relative strength between the near-infrared continuum (1.22–1.33  $\mu\text{m}$ , located between strong H<sub>2</sub>O absorption bandheads) and the mid-infrared molecular absorption. Lastly, we quantify the amplitude of the H<sub>2</sub>O absorption feature seen in the WFC3 data, calculating the ratio of the observed feature to that of radiative transfer models<sup>17</sup> assuming clear atmospheres and solar abundances.

Comparisons between these indices (Fig. 3, Extended Data Figs 1 and 2) show trends between cloudy and cloud-free planets. When comparing the  $\Delta Z_{\text{J-LM}}$  index to the H<sub>2</sub>O amplitude (Fig. 3), the hot-Jupiter transmission spectra strongly favour models in which the H<sub>2</sub>O amplitude is lower owing to obscuration by hazes and clouds, rather than to lower abundances ( $5.9\sigma$  significance). Contaminating effects of persistent unocculted star spots<sup>5</sup> and plagues<sup>28</sup> have been proposed in order to mimic the optical haze-scattering signature of hot Jupiters (particularly HD 189733b, which orbits an active star; see Methods). However, our survey sample is sufficiently varied in stellar activity, such that we find no correlation between stellar activity and the strength of the optical scattering slope (as measured by the  $\Delta Z_{\text{UB-LM}}$  index) for planets in our sample (Extended Data Fig. 3). One of the main distinguishing features between hazy atmospheres and those that are clear and have sub-solar abundances resides in the near-infrared continuum, measured with the WFC3 spectra. The presence of haze raises the level of the near-infrared continuum relative to the mid-infrared continuum, leading to high  $\Delta Z_{\text{J-LM}}$  index values with low near-infrared H<sub>2</sub>O amplitudes (Extended Data Fig. 4). In clear-atmosphere models, where the abundances are lower, the continuum level drops at both near- and mid-infrared wavelengths, accompanied by a reduction in the amplitude of absorption features, resulting in  $\Delta Z_{\text{J-LM}}$  index values that are too low to explain the data (Fig. 3).

The hot-Jupiter transmission spectra ordered by the  $\Delta Z_{\text{UB-LM}}$  spectral index reveals a continuum from clear atmospheres to atmospheres with strong clouds and hazes (Fig. 1 and Table 1). The presence of clouds has also been inferred for brown dwarf atmospheres, which

have similar temperatures to hot Jupiters<sup>29</sup>. Although there is a well defined sequence from the warmer, cloudy L-dwarfs to the cooler, clear T-dwarfs<sup>29,30</sup>, hot Jupiters do not exhibit a strong relationship of temperature to cloud formation, given that both cloudy and not cloudy planets appear throughout the entire 1,000–2,500 K temperature range (Fig. 2).

We suggest that the difference between hot Jupiters and brown dwarfs is due to the vertical temperature structure of hot-Jupiter atmospheres. Hot Jupiters have very much steeper pressure–temperature profiles compared to isolated brown dwarfs, owing to the strong incident stellar flux heating the top of the planetary atmosphere (see Extended Data Fig. 5). Since cloud condensation curves run nearly parallel to hot-Jupiter profiles, a relatively small temperature shift (about 100 K) could easily move a cloud base by a factor of tens or hundreds in pressure, in or out of the visible atmosphere. In comparison, because brown dwarfs have shallow pressure–temperature profiles, clouds will form in the visible atmosphere across a very wide temperature range. Furthermore, the expected nearly isothermal region of a hot-Jupiter profile at pressures from about 1 bar to 100 bar may cause some planets, but not others, to have cloud materials cold-trapped at depth, out of the visible atmosphere. Given this temperature sensitivity, the role of clouds in hot Jupiters may appear almost stochastic from planet to planet. In addition, hot Jupiters have a wider range of gravities and metallicities, both of which will affect the planet's atmospheric temperature structure, circulation and condensate formation.

Future studies will benefit greatly from broad atmospheric surveys that can further distinguish between clear and cloudy exoplanets. If the  $\Delta Z_{\text{UB-LM}}$ ,  $\Delta Z_{\text{J-LM}}$  and  $\text{H}_2\text{O}$  indices can be measured in advance of such surveys, planets with clear atmospheres can be identified and studied in greater detail, allowing reliable chemical abundances to be measured and thus providing valuable constraints on formation models.

**Online Content** Methods, along with any additional Extended Data display items and Source Data, are available in the online version of the paper; references unique to these sections appear only in the online paper.

Received 19 June; accepted 1 October 2015.

Published online 14 December 2015.

- Deming, D. *et al.* Infrared transmission spectroscopy of the exoplanets HD 209458b and XO-1b using the Wide Field Camera-3 on the *Hubble Space Telescope*. *Astrophys. J.* **774**, 95 (2013).
- Line, M. R. *et al.* A near-infrared transmission spectrum for the warm Saturn HD 189733b. *Astrophys. J.* **778**, 183 (2013).
- Sing, D. K. *et al.* HST hot-Jupiter transmission spectral survey: evidence for aerosols and lack of TiO in the atmosphere of WASP-12b. *Mon. Not. R. Astron. Soc.* **436**, 2956–2973 (2013).
- Sing, D. K. *et al.* HST hot-Jupiter transmission spectral survey: detection of potassium in WASP-31b along with a cloud deck and Rayleigh scattering. *Mon. Not. R. Astron. Soc.* **446**, 2428–2443 (2015).
- McCullough, P. R. *et al.* Water vapor in the spectrum of the extrasolar planet HD 189733b. I. The transit. *Astrophys. J.* **791**, A55 (2014).
- Madhusudhan, N. *et al.*  $\text{H}_2\text{O}$  abundances in the atmospheres of three hot Jupiters. *Astrophys. J.* **791**, L9 (2014).
- Madhusudhan, N. *et al.* Toward chemical constraints on hot Jupiter migration. *Astrophys. J.* **794**, L12 (2014).
- Seager, S. *et al.* On the dayside thermal emission of hot Jupiters. *Astrophys. J.* **632**, 1122–1131 (2005).
- Öberg, K. I., Murray-Clay, R. & Bergin, E. A. The effects of snowlines on C/O in planetary atmospheres. *Astrophys. J.* **743**, L16 (2011).
- Pont, F. *et al.* The prevalence of dust on the exoplanet HD 189733b from *Hubble* and *Spitzer* observations. *Mon. Not. R. Astron. Soc.* **432**, 2917–2944 (2013).
- Nikolov, N. *et al.* HST hot-Jupiter transmission spectral survey: haze in the atmosphere of WASP-6b. *Mon. Not. R. Astron. Soc.* **447**, 463–478 (2015).

- Nikolov, N. *et al.* *Hubble Space Telescope* hot Jupiter transmission spectral survey: a detection of Na and strong optical absorption in HAT-P-1b. *Mon. Not. R. Astron. Soc.* **437**, 46–66 (2014).
- Wakeford, H. R. *et al.* HST hot Jupiter transmission spectral survey: detection of water in HAT-P-1b from WFC3 near-IR spatial scan observations. *Mon. Not. R. Astron. Soc.* **435**, 3481–3493 (2013).
- Huitson, C. M. *et al.* An HST optical to near-IR transmission spectrum of the hot Jupiter WASP-19b: detection of atmospheric water and likely absence of TiO. *Mon. Not. R. Astron. Soc.* **434**, 3252–3274 (2013).
- Mandel, K. & Agol, E. Analytic light curves for planetary transit searches. *Astrophys. J.* **580**, L171–L175 (2002).
- Pont, F., Zucker, S. & Queloz, D. The effect of red noise on planetary transit detection. *Mon. Not. R. Astron. Soc.* **373**, 231–242 (2006).
- Fortney, J. J. *et al.* A unified theory for the atmospheres of the hot and very hot Jupiters: two classes of irradiated atmospheres. *Astrophys. J.* **678**, 1419–1435 (2008).
- Burrows, A. *et al.* Photometric and spectral signatures of three-dimensional models of transiting giant exoplanets. *Astrophys. J.* **719**, 341–350 (2010).
- Seager, S. & Sasselov, D. D. Theoretical transmission spectra during extrasolar giant planet transits. *Astrophys. J.* **537**, 916–921 (2000).
- Lodders, K. Jupiter formed with more tar than ice. *Astrophys. J.* **611**, 587–597 (2004).
- Mousis, O., Lunine, J. I., Madhusudhan, N. & Johnson, T. V. Nebular water depletion as the cause of Jupiter's low oxygen abundance. *Astrophys. J.* **751**, L7 (2012).
- Wong, M. H. *et al.* Updated Galileo probe mass spectrometer measurements of carbon, oxygen, nitrogen, and sulfur on Jupiter. *Icarus* **171**, 153–170 (2004).
- Kreidberg, L. *et al.* Clouds in the atmosphere of the super-Earth GJ 1214b. *Nature* **505**, 69–72 (2014).
- Knutson, H. *et al.* *Hubble Space Telescope* near-IR transmission spectroscopy of the super-Earth HD 97658b. *Astrophys. J.* **794**, A155 (2014).
- Morley, C. V. *et al.* Neglected clouds in T and Y dwarf atmospheres. *Astrophys. J.* **756**, 172 (2012).
- Wakeford, H. R. & Sing, D. K. Transmission spectral properties of clouds for hot Jupiter exoplanets. *Astron. Astrophys.* **573**, A122 (2015).
- Showman, A. P. & Polvani, L. M. Equatorial superrotation on tidally locked exoplanets. *Astrophys. J.* **738**, 71 (2011).
- Oshagh, M. *et al.* Impact of occultations of stellar active regions on transmission spectra. *Astron. Astrophys.* **568**, A99 (2014).
- Burgasser, A. J. *et al.* Evidence of cloud disruption in the L/T dwarf transition. *Astrophys. J.* **571**, L151–L154 (2002).
- Cushing, M. C., Rayner, J. T. & Vacca, W. D. An infrared spectroscopic sequence of M, L, and T dwarfs. *Astrophys. J.* **623**, 1115–1140 (2005).

**Acknowledgements** This work is based on observations with the NASA/ESA HST, obtained at the Space Telescope Science Institute (STScI) operated by AURA, Inc. This work is also based in part on observations made with the Spitzer Space Telescope, which is operated by the Jet Propulsion Laboratory, California Institute of Technology under a contract with NASA. The research leading to these results has received funding from the European Research Council under the European Union's Seventh Framework Programme (FP7/2007-2013)/ERC grant agreement number 336792. D.K.S., F.P. and N.N. acknowledge support from STFC consolidated grant ST/J0016/1. Support for this work was provided by NASA through grants under the HST-GO-12473 programme from the STScI. A.L.E., P.A.W. and A.V.M. acknowledge support from CNES and the French Agence Nationale de la Recherche (ANR), under programme ANR-12-BS05-0012 'Exo-Atmos'. P.A.W. and H.W. acknowledge support from the UK Science and Technology Facilities Council (STFC). G.W.H. and M.H.W. acknowledge support from NASA, NSF, Tennessee State University and the State of Tennessee through its Centers of Excellence programme.

**Author Contributions** D.K.S. led the data analysis for this project, with contributions from D.D., T.M.E., N.P.G., C.M.H., H.A.K., N.N., H.R.W., S.A., G.E.B. and P.A.W. J.J.F., A.S.B., A.P.S., A.L.E. and T.K. provided atmospheric models. G.W.H. and M.H.W. provided photometric stellar activity monitoring data and J.M.D. provided Spitzer data. D.K.S. wrote the manuscript along with J.J.F., H.R.W., T.K., N.N. and T.M.E. All authors discussed the results and commented on the draft.

**Author Information** Reprints and permissions information is available at [www.nature.com/reprints](http://www.nature.com/reprints). The authors declare no competing financial interests. Readers are welcome to comment on the online version of the paper. Correspondence and requests for materials should be addressed to D.K.S. ([sing@astro.ex.ac.uk](mailto:sing@astro.ex.ac.uk)).

## METHODS

**HST observations.** The overall observational strategy is similar for each of the eight targets in the Large HST programme (GO-12473; principal investigator D.K.S.), which have been presented for WASP-19b<sup>14</sup>, HAT-P-1b<sup>12,13</sup>, WASP-12b<sup>3</sup>, WASP-31b<sup>4</sup> and WASP-6b<sup>11</sup> with the details summarized here and applied to the remaining targets HAT-P-12b, WASP-17b and WASP-39b. We observed two transits of each target with the HST STIS G430L grating, and one with the STIS G750L. The G430L and G750L data sets contain typically 43 to 53 spectra, which span either four or five spacecraft orbits and were taken with a wide  $52 \text{ arcsec} \times 2 \text{ arcsec}$  slit to minimize slit light losses. Both gratings have resolutions of  $R$  of  $\lambda/\Delta\lambda = 530\text{--}1,040$  ( $\sim 2$  pixels is  $5.5 \text{ \AA}$  for G430L and  $\sim 2$  pixels is  $9.8 \text{ \AA}$  for G750L). The G430L grating covers the wavelength range from  $2,900 \text{ \AA}$  to  $5,700 \text{ \AA}$ , while the G750L grating covers  $5,240 \text{ \AA}$  to  $10,270 \text{ \AA}$ . The visits of HST were scheduled such that the third and/or fourth spacecraft orbits contain the transit, providing good coverage between second and third contact, as well as an out-of-transit baseline time series before and after the transit. Exposure times of 279 s were used in conjunction with a 128-pixel-wide sub-array, which reduces the readout time between exposures to 21 s, providing a 93% overall duty cycle.

The STIS data set was pipeline-reduced with the latest version of CALSTIS, and cleaned for cosmic ray detections with a customized procedure<sup>11</sup>. The G750L data set was defringed using contemporaneous fringe flats. The spectral aperture extraction was done with IRAF, using a 13-pixel-wide aperture with no background subtraction, which minimizes the out-of-transit standard deviation of the white-light curves. The extracted spectra were then Doppler-corrected to a common rest frame through cross-correlation, which helped remove sub-pixel wavelength shifts in the dispersion direction. The STIS spectra were then used to create both a white-light photometric time series and custom wavelength bands covering the spectra, integrating the appropriate wavelength flux from each exposure for different bandpasses.

Observations of HAT-P-1b and WASP-31b were also conducted in the infrared with the HST WFC3 instrument as part of GO-12473 and are detailed in refs 4 and 13. The observations use the infrared G141 grism in forward spatial scan mode over five HST orbits. Spatial scanning is done by slewing the telescope in the cross-dispersion direction during integration in a similar manner for each exposure, which increases the duty cycle and greatly increases the counts obtained per exposure. We used the ‘*ima*’ outputs from the CALWFC3 pipeline, which performs reference pixel subtraction, zero-read and dark current subtraction, and a nonlinearity correction. For the spectral extraction, we trimmed a wide box around each spectral image, with the spectra extracted using custom routines from the programming language IDL, similar to IRAF’s procedure from the APALL program. The aperture width was determined by minimizing the standard deviation of the fitted white-light curve. The aperture was traced around a computed centring profile, which was found to be consistent in the  $y$  axis with an error of  $<0.1$  pixels. Background subtraction was applied using a clean region of the untrimmed image. For wavelength calibration, direct images were taken in the F139M narrow-band filter at the beginning of the observations. We assumed that all pixels in the same column have the same effective wavelength, as the spatial scan varied in the  $x$ -axis direction by less than one pixel, resulting in a spectral range from  $1.1 \mu\text{m}$  to  $1.7 \mu\text{m}$ . This wavelength range was later restricted to avoid the strongly sloped edges of the grism response, which results in much lower signal-to-noise light curves.

For the comparative study, we also included the WFC3 observations for WASP-19b<sup>14</sup>, HD 209458b<sup>1</sup>, HAT-P-12b<sup>2</sup> and WASP-17b<sup>31</sup> (GO-12181; principal investigator D.D.). The WFC3 observations of WASP-12b<sup>3</sup> were also included (GO-12230; principal investigator M. R. Swain), as was HD 189733b<sup>5</sup> (GO-12881; principal investigator P. R. McCullough). The WFC3 observations of WASP-12b, WASP-17b, WASP-19b and HAT-P-12b were observed in stare mode, rather than with spatial scanning, and therefore have generally poorer overall photometric precision. See Extended Data Table 1 for a list of all observations.

**Spitzer observations.** The eight targets in the large HST survey were also all covered by Spitzer transit observations as part of an Exploration Science Programme (90092; principal investigator J.-M. Désert) obtained using the Infrared Array Camera (IRAC) instrument with the  $3.6\text{-}\mu\text{m}$  and  $4.5\text{-}\mu\text{m}$  channels in subarray mode ( $32 \times 32$  pixels). Photometry was extracted from the basic calibrated FITS data cubes, produced by the IRAC pipeline after dark subtraction, flat-fielding, linearization and flux calibration. The images contain 64 exposures taken in sequence and have per-image integration times of 1.92 s. Both channels generally show a strong ramp feature at the beginning of the time series, and we elected to trim the first  $\sim 20$  min of data to allow the detector to stabilize. We performed outlier filtering for hot (energetic) or cold (low-count values) pixels in the data by examining the time series of each pixel and subtracted the background flux from each image<sup>11</sup>.

We measured the position of the star on the detector in each image incorporating the flux-weighted centroiding method using the background subtracted pixels from each image, for a circular region with a radius of 3 pixels centred on the

approximate position of the star. We extracted photometric measurements from our data using both aperture photometry from a grid of apertures ranging from 1.5 to 3.5 pixels (in increments of 0.1) and time-variable aperture photometry. The best result was selected by measuring the flux scatter of the out-of-transit portion of the light curves for both channels after filtering the data for  $5\sigma$  outliers with a width of 20 data points.

**Transit light curve analysis.** All the transit light curves were modelled with analytical transit models<sup>15</sup>. For the white-light curves, the central transit time, orbital inclination, stellar density, planet-to-star radius contrast, stellar baseline flux and instrument systematic trends were fitted simultaneously. The period was initially fixed to a literature value, before being updated, with our final fits adopting the values obtained from an updated transit ephemeris. Both G430L transits were fitted simultaneously with a common inclination, stellar density and planet-to-star radius contrast. The results from the HST white-light curve and Spitzer fits were then used in conjunction with literature results to refine the orbital ephemeris and overall planetary system properties. To account for the effects of limb-darkening on the transit light curve, we adopted the four-parameter nonlinear limb-darkening law, calculating the coefficients with stellar models<sup>32,33</sup>.

As in our past STIS studies, we applied orbit-to-orbit flux corrections by fitting for a low-order polynomial to the photometric time series phased on the HST orbital period. The baseline flux level of each visit was free to vary in time linearly, described by two fit parameters. In addition, for the G750L we found it justified by the Bayesian Information Criteria<sup>34</sup> to also linearly fit for two further systematic trends which correlated with the  $x$  and  $y$  detector positions of the spectra, as determined from a linear spectral trace in IRAF. The orders of the fit polynomials were statistically justified based on the Bayesian Information Criteria<sup>34</sup>, and the systematic trends were fitted simultaneously with the transit parameters.

The errors on each data point were initially set to the pipeline values, which are dominated by photon noise but also includes readout noise. The best-fitting parameters were determined simultaneously with a Levenberg–Marquardt least-squares algorithm<sup>35</sup> using the unbinned data. After the initial fits, the uncertainties for each data point were rescaled based on the standard deviation of the residuals and any measured systematic errors correlated in time (‘red noise’), thus taking into account any underestimated errors calculated by the reduction pipeline in the data points. The uncertainties on the fitted parameters were calculated using the covariance matrix from the Levenberg–Marquardt algorithm, which assumes that the probability space around the best-fitting solution is well described by a multivariate Gaussian distribution and equivalent results were found when using a Markov Chain Monte Carlo analysis<sup>36</sup>. Inspection of the two-dimensional probability distributions from both methods indicated that there were no significant correlations between the planet-to-star radius contrasts and systematic trend parameters.

In an additional analysis step compared to our previous results<sup>4,11,12</sup>, we also marginalized over the systematic models<sup>37</sup> for the spectra of WASP-17b, WASP-39b, HAT-P-1b, HAT-P-12b and HD 209458b. Under this approach, we effectively averaged the results obtained from a suite of systematics models in a coherent manner. For each systematic model used to correct the data, we calculated the evidence of fit, which is then used to apply a weight to the parameter of interest ( $R_p/R_*$ ) measured using that model. In doing so, we marginalized over our uncertainty as to selecting which model is actually the ‘correct’ model. For the STIS data we included all combinations of factors up to the 4th order in both HST phase, 3rd order in detector positions  $x$  and  $y$ , 3rd order in wavelength shift, and 1st order in time. For the WFC3 data, our grid of parameterized models includes all combinations of factors up to the fourth order in both HST phase, to correct for ‘HST breathing’ effects, and up to the fourth order in wavelength shift, in addition to the visit-long linear trend. In addition, we also included exponential HST phase models, with a linear and squared planetary phase trend. For the Spitzer data, we included all combinations of the  $x$  and  $y$  positions of the stellar point spread function on the detector, including the cross-product from polynomials of  $x$  and  $y$  up to a second-order. We note that the best-fitting systematics models for HST and Spitzer are generally well constrained and the marginalized results were very similar to those based on model selection by the Bayesian Information Criteria<sup>34</sup>. For HD 209458b, lightcurve analyses and marginalization were performed using Gaussian process models<sup>38</sup>. Owing to the flexibility of Gaussian process models, a broad range of systematics behaviours can be captured without the need to provide an explicit functional form. The results of a single Gaussian process model are thus comparable to marginalizing over many simpler parametric systematics models, as was done for the other lightcurves<sup>37</sup>.

**Atmospheric models.** The synthetic spectra<sup>17,39</sup> used for this study include isothermal models as well as those with a self-consistent treatment of radiative transfer and chemical equilibrium of neutral and ionic species. Chemical mixing ratios and opacities were calculated assuming local thermochemical equilibrium accounting for condensation and thermal ionization but not photoionization<sup>40–43</sup>, for both solar metallicity and sub-solar metallicity abundances.

A simplified treatment adding in small aerosol haze particles was performed by including a Rayleigh scattering opacity (that is,  $\sigma = \sigma_0(\lambda/\lambda_0)^{-4}$ ) that had a cross-section which was  $10\times$ ,  $100\times$  and  $1,000\times$  the cross-section of molecular hydrogen gas ( $\sigma_0 = 5.31 \times 10^{-27} \text{ cm}^2$  at  $\lambda_0 = 350 \text{ nm}$ ; ref. 44). Similarly, to include the effects of a flat cloud deck we included a wavelength-independent cross-section, which was  $1\times$ ,  $10\times$  and  $100\times$  the cross-section of molecular hydrogen gas at 350 m (see Extended Data Fig. 4).

**Transmission spectral indices.** To enable a direct comparison between planets, the transmission spectra have been plotted on a common scale by dividing the measured wavelength-dependent altitude of the transmission spectra,  $z(\lambda)$ , by the planet's atmospheric scale height ( $H_{\text{eq}}$ , the vertical distance over which the gas pressure drops by a factor of  $e$ ) estimated using the equilibrium temperature. The analytical relation for the wavelength-dependent transit-measured altitude  $z(\lambda)$  of a hydrostatic atmosphere is<sup>44</sup>:

$$z(\lambda) = H \ln \left( \frac{\varepsilon P \sigma(\lambda)}{\tau} \sqrt{\frac{2\pi R_p}{kT\mu g}} \right)$$

where  $\varepsilon$  is the abundance of the absorbing or scattering species,  $P$  is the pressure at a reference altitude,  $\sigma(\lambda)$  is the wavelength-dependent cross-section,  $\tau$  is the optical thickness at the effective transit-measured radius,  $k$  is Boltzmann's constant,  $T$  is the local gas temperature,  $\mu$  is the mean mass of the atmospheric particles,  $g$  the planetary surface gravity,  $R_p$  the planetary radius, and  $H = kT/\mu g$  is the atmospheric pressure scale height. The altitude difference measured between two wavelength regions ( $\lambda$  and  $\lambda'$ ) in a transmission spectrum is proportional to the quantity:

$$z(\lambda) - z(\lambda') = H \ln(\alpha/\alpha')$$

where  $\alpha$  is the absorption plus scattering extinction coefficient:

$$\alpha = \varepsilon \sigma(\lambda)$$

Thus, the quantity  $\Delta Z_{\lambda-\lambda'} = z(\lambda) - z(\lambda')$  is related to the ratio of the total scattering plus absorption of the atoms and molecules between the wavelength regions  $\lambda$  and  $\lambda'$ , and we use the quantity  $\Delta Z_{\lambda-\lambda'}/H_{\text{eq}} = \ln(\alpha/\alpha')$  as a metric to intercompare the atmospheric extinction for the different planets in our survey. Note that the temperature and scale height of the upper atmosphere can differ from the equilibrium value, especially at high altitudes where hot upper layers in hot Jupiters have been found<sup>45–48</sup>.

We defined indices around three main wavelength regions (see Table 1). We used a blue-optical band consisting of the G430L grating, which is sensitive between  $0.3 \mu\text{m}$  and  $0.57 \mu\text{m}$  and roughly covers the Johnson U and B photometric bandpasses. This wavelength region is almost always exclusively dominated by scattering for clear, cloudy and hazy exoplanets (see Extended Data Fig. 4). The second is a near-infrared band between  $1.22 \mu\text{m}$  and  $1.33 \mu\text{m}$ , which has overlap with the Johnson J photometric band, and is located between the strong  $\text{H}_2\text{O}$  absorption bands centred around  $1.15 \mu\text{m}$  and  $1.4 \mu\text{m}$ . This wavelength region is sensitive to the scattering continuum in hazy, cloudy and highly sub-solar models and the  $\text{H}_2\text{O}$  continuum in clear atmospheres with abundances near solar (see Extended Data Fig. 4). We also used a third wavelength region in the mid-infrared between  $3 \mu\text{m}$  and  $5 \mu\text{m}$ , which overlaps with the Johnson L and M photometric bandpasses and consists of the two Spitzer IRAC photometric channels 1 and 2. This wavelength region is highly sensitive to strong  $\text{H}_2\text{O}$ , CO and  $\text{CH}_4$  absorption bands, which are the main active molecular species expected in hot Jupiters<sup>17–19</sup>, and only sensitive to scattering in the cloudiest cases, making it an overall effective measure of the total molecular extinction (see Extended Data Fig. 4).

From the data,  $\Delta Z_{\text{UB-LM}}$  was measured taking the difference between the planet radius measured in the blue-optical HST data using the G430L grating (UB, wavelengths  $0.3\text{--}0.57 \mu\text{m}$ ) and the weighted-average value of the radii measured in Spitzer IRAC photometric channels 1 and 2 (LM, wavelengths  $3\text{--}5 \mu\text{m}$ ).  $\Delta Z_{\text{J-LM}}$  was measured similarly, although using the near-infrared WFC3 data (J, wavelengths  $1.22\text{--}1.33 \mu\text{m}$ ).

In addition, we also measured the amplitude of the near-infrared  $\text{H}_2\text{O}$  absorption band using the WFC3 spectra (see Table 1), measuring the average radii in a band containing strong  $\text{H}_2\text{O}$  absorption (between  $1.34 \mu\text{m}$  and  $1.49 \mu\text{m}$ ) compared to an adjacent band between strong  $\text{H}_2\text{O}$  features ( $1.22 \mu\text{m}$  and  $1.33 \mu\text{m}$ ). The measured  $\text{H}_2\text{O}$  amplitude for each exoplanet was then divided by the value predicted by atmospheric models<sup>17,39</sup> calculated for each planet using a planet-averaged temperature–pressure profile assuming clear atmospheres and solar abundances.

From Fig. 3, a likely inverse correlation is seen between the  $\text{H}_2\text{O}$  amplitude and the  $\Delta Z_{\text{J-LM}}/H_{\text{eq}}$  index, with the Spearman's rank correlation coefficient measured to be  $-0.76$  which has a false alarm probability of 2.8%. We note that this false alarm probability is not the probability that the water depletion scenario is correct, as that

is excluded with Fig. 3 to a much higher degree ( $5.9\sigma$  significance). A much weaker inverse correlation of  $-0.48$  is found with  $\Delta Z_{\text{UB-LM}}$  in Extended Data Fig. 2, although that has a high false alarm probability of 23%.

**Stellar activity.** As stellar activity can affect the measurement of a transmission spectrum, we photometrically monitored the activity levels of our target stars with the Cerro Tololo Inter-American Observatory (CTIO) 1.3-m telescope for the southern targets<sup>14</sup> and the Tennessee State University Celestron 14-inch (C14) Automated Imaging Telescope (AIT) located at Fairborn Observatory in Arizona for the northern targets<sup>49</sup>. All but two of our targets showed low levels of stellar activity, with observed photometric variations or upper limits which are sufficiently small that their effects on measuring the transmission spectra are minimal compared to the measurement errors<sup>3,4,11–13</sup>. The two most active stars in the survey, WASP-19A and HD 189733A, were corrected for occulted and un-occulted star spots<sup>10,14</sup>. As no contemporaneous photometric monitoring of WASP-19A is available for the July 2011 WFC3 spectra from ref. 14, we matched the spectra to the spot-corrected transit depth of  $R_p/R_* = 0.14019 \pm 0.00073$  as measured using HST WFC3 on 12 June 2014 from GO-13431 (principal investigator C. M. Huitson), which had simultaneous CTIO activity monitoring. We also normalized the differential transit depths of the WFC3 spectra<sup>5</sup> to a transit depth value consistent with ref. 10, which has a uniform treatment between the HST and Spitzer data sets of system parameters, limb-darkening and activity correction.

As effects of stellar activity could potentially mimic an optical scattering slope in a transmission spectra<sup>5,10,28,45</sup>, we searched for a relationship between the activity levels of the stars in our survey and the presence of a strong optical slope. If stellar activity were the main cause of the enhanced optical slopes, rather than scattering by hazes or clouds, then it is expected that highly active stars would have higher levels of spots and plages, and should show preferentially larger transmission spectral slopes. As an additional measure of stellar activity, we used the strength of the Ca II H and K emission lines as a stellar activity indicator ( $\log R'_{\text{HK}}$ ), as measured by Keck HIRES<sup>50,51</sup>; see Table 1. We searched for a correlation with the chromospheric activity index  $\log R'_{\text{HK}}$  as it is correlated with the stellar photometric variability<sup>52</sup> and can be used to quantify stars with low activity levels, for which the photometric variations would be undetectable. We found no significant correlation with  $\log R'_{\text{HK}}$  activity and either the presence of haze or the strength of optical transmission spectral slope, as measured with the  $\Delta Z_{\text{J-LM}}$  index (Extended Data Fig. 3). This suggests that the effects of stellar activity are not the overall cause of the strong optical slopes seen in some of the transmission spectra.

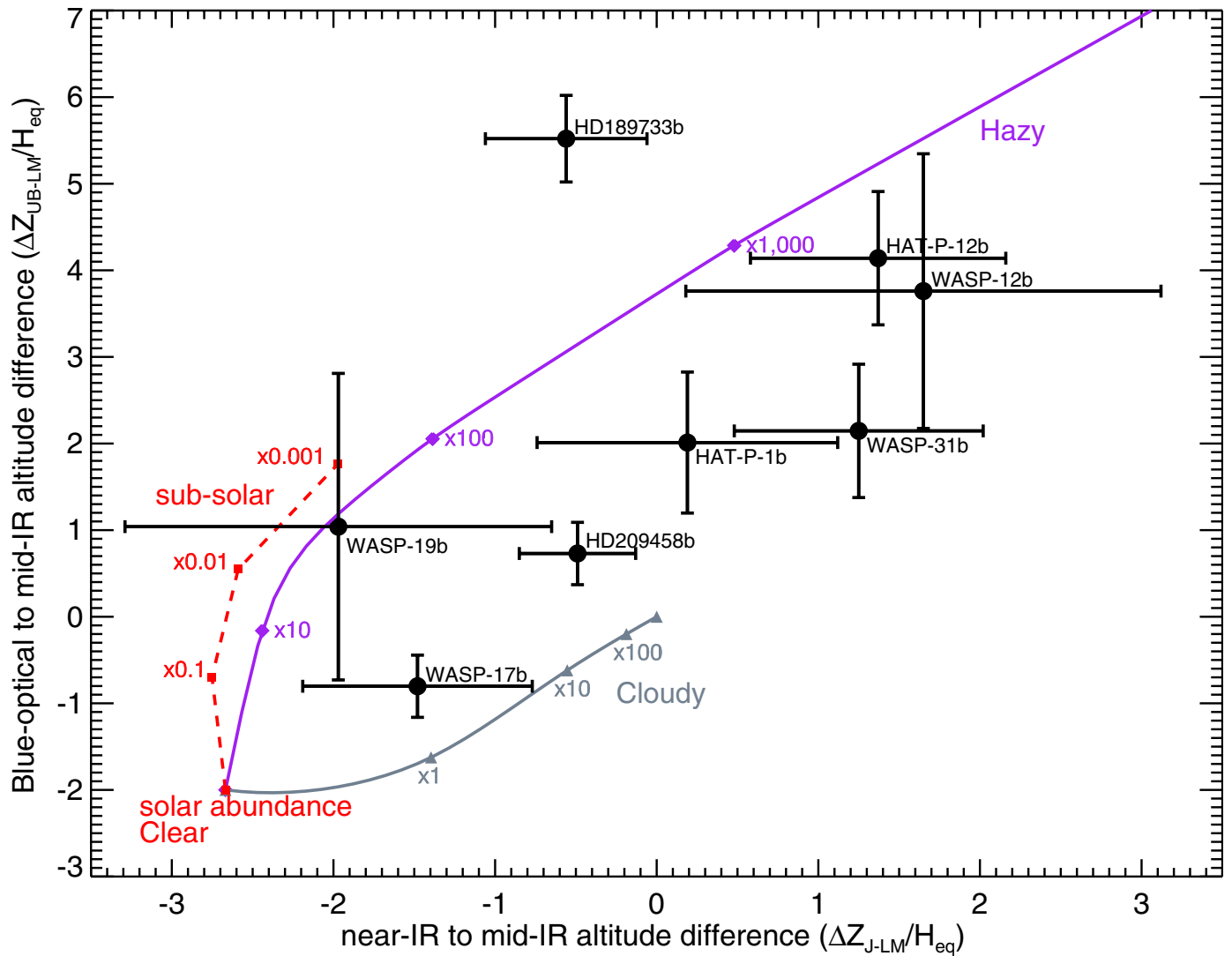
There are also other indications that stellar activity does not have a dominant role. For one, while changing stellar activity levels should have an effect on the transmission spectra, no significant variations were seen between the three epochs of the HST STIS spectra, which has an overlapping wavelength region, for all of our targets, including active stars. In addition, the atmospheric temperature can be derived by measuring the transmission spectral slope in an atmosphere dominated by Rayleigh scattering<sup>3,4,11,45</sup>, and the temperatures found fitting a Rayleigh scattering slope for HD 189733b, HAT-P-12b and WASP-6b ( $1,340 \pm 150 \text{ K}$ ,  $1,010 \pm 80 \text{ K}$  and  $973 \pm 144 \text{ K}$ , respectively) are in good agreement with the planetary temperatures  $T_{\text{eq}}$  expected ( $1,196 \text{ K}$ ,  $958 \text{ K}$  and  $1,183 \text{ K}$ , respectively). This agreement is consistent with the atmospheric temperature, rather than stellar activity, being probed by the scattering haze. For these three stars, where HAT-P-12 has a much lower activity than the other two, the individual activity levels would have to be finely tuned for the spectral slopes to mimic the planetary temperatures.

In addition to condensation chemistry<sup>53</sup>, hazes can also form through photochemical processes resulting in hydrocarbon aerosols<sup>54</sup>. This process is more effective for cooler exoplanets<sup>55</sup> and the incident stellar ultraviolet irradiation also plays an important factor in hydrocarbon formation<sup>54</sup>. Our results indicate no correlation with the presence of haze to either the atmospheric temperature or levels of ultraviolet irradiation (as traced by stellar activity indicators), which generally favours condensation chemistry over photochemical processes as the general source of the observed hazes and clouds.

**Code availability.** We have opted not to make the customized IDL codes used to produce the spectra publicly available owing to their undocumented intricacies.

31. Mandell, A. M. *et al.* Exoplanet transit spectroscopy using WFC3: WASP-12 b, WASP-17 b, and WASP-19 b. *Astrophys. J.* **779**, 128 (2013).
32. Sing, D. K. *et al.* Stellar limb-darkening coefficients for CoRoT and Kepler. *Astron. Astrophys.* **510**, A21 (2010).
33. Hayek, W., Sing, D. K., Pont, F. & Asplund, M. Limb darkening laws for two exoplanet host stars derived from 3D stellar model atmospheres. Comparison with 1D models and HST light curve observations. *Astron. Astrophys.* **539**, A102 (2012).
34. Schwarz, G. Estimating the dimension of a model. *Ann. Stat.* **6**, 461–464 (1978).
35. Markwardt, C. B. Non-linear least squares fitting in IDL with MPFIT. *Astron. Soc. Pacif. Conf. Ser.* **411**, 251–254 (2009).

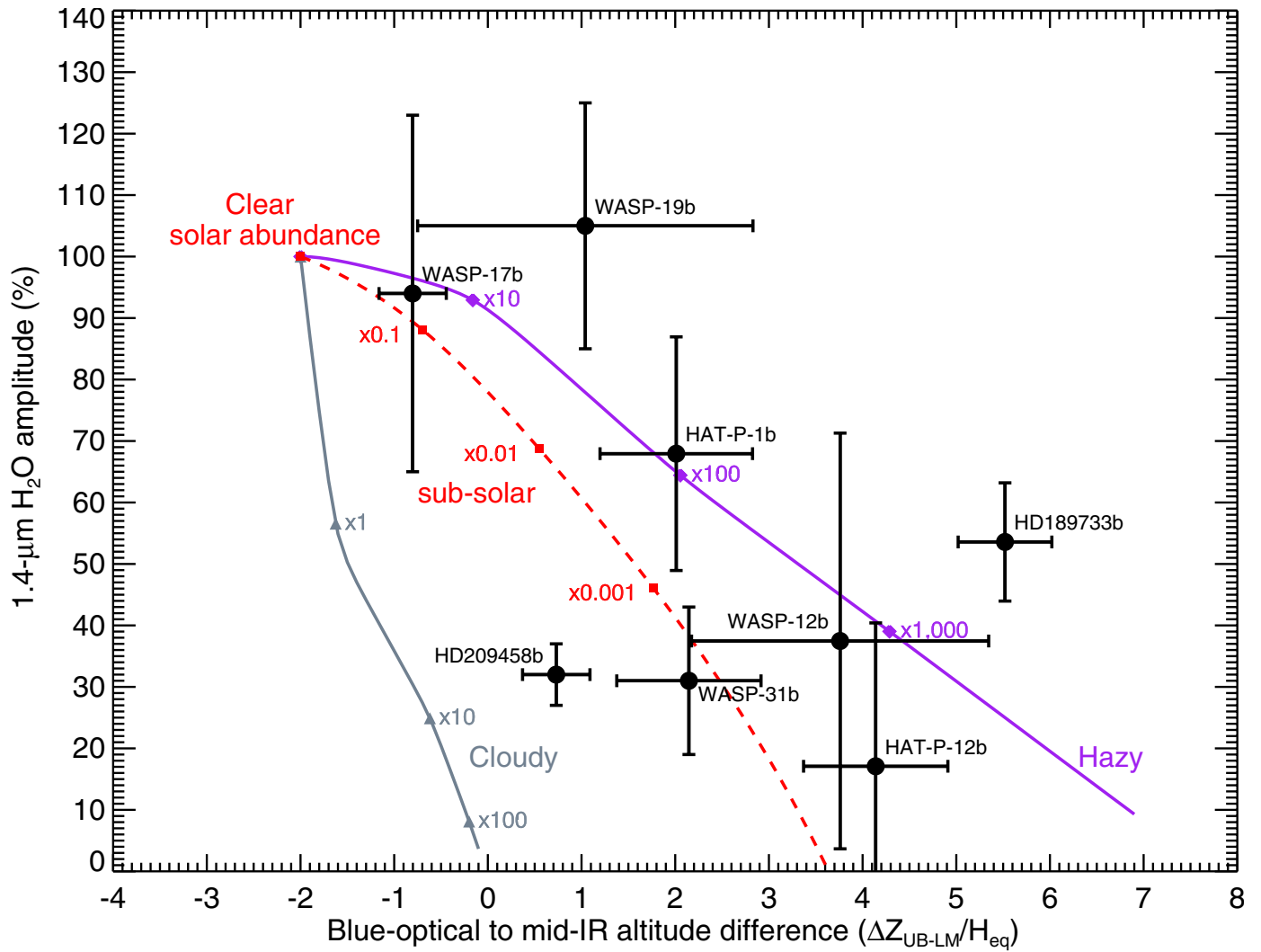
36. Eastman, J., Gaudi, B. S. & Agol, E. EXOFAST: a fast exoplanetary fitting suite in IDL. *Publ. Astron. Soc. Pacif.* **125**, 83–112 (2013).
37. Gibson, N. P. Reliable inference of exoplanet light-curve parameters using deterministic and stochastic systematics models. *Mon. Not. R. Astron. Soc.* **445**, 3401–3414 (2014).
38. Evans, T. M. *et al.* A uniform analysis of HD 209458b *Spitzer*/IRAC lightcurves with Gaussian process models. *Mon. Not. R. Astron. Soc.* **451**, 680–694 (2015).
39. Fortney, J. J. *et al.* Transmission spectra of three-dimensional hot Jupiter model atmospheres. *Astrophys. J.* **709**, 1396–1406 (2010).
40. Lodders, K. Alkali element chemistry in cool dwarf atmospheres. *Astrophys. J.* **519**, 793–801 (1999).
41. Lodders, K. & Fegley, B. Atmospheric chemistry in giant planets, brown dwarfs, and low-mass dwarf stars. I. Carbon, nitrogen, and oxygen. *Icarus* **155**, 393–424 (2002).
42. Freedman, R. S., Marley, M. S. & Lodders, K. Line and mean opacities for ultracool dwarfs and extrasolar planets. *Astrophys. J.* **174** (Supp.), 504–513 (2008).
43. Visscher, C., Lodders, K. & Fegley, B. Jr. Atmospheric chemistry in giant planets, brown dwarfs, and low-mass dwarf stars. III. Iron, magnesium, and silicon. *Astrophys. J.* **716**, 1060–1075 (2010).
44. Lecavelier des Etangs, A. *et al.* Rayleigh scattering in the transit spectrum of HD 189733b. *Astron. Astrophys.* **481**, L83–L86 (2008).
45. Sing, D. K. *et al.* *Hubble Space Telescope* transmission spectroscopy of the exoplanet HD 189733b: high-altitude atmospheric haze in the optical and near-ultraviolet with STIS. *Mon. Not. R. Astron. Soc.* **416**, 1443–1455 (2011).
46. Huitson, C. M. *et al.* Temperature–pressure profile of the hot Jupiter HD 189733b from *HST* sodium observations: detection of upper atmospheric heating. *Mon. Not. R. Astron. Soc.* **422**, 2477–2488 (2012).
47. Vidal-Madjar, A. *et al.* The upper atmosphere of the exoplanet HD 209458 b revealed by the sodium D lines. Temperature–pressure profile, ionization layer, and thermosphere. *Astron. Astrophys.* **527**, A110 (2011).
48. Wyttenbach, A., Ehrenreich, D., Lovis, C., Udry, S. & Pepe, F. Spectrally resolved detection of sodium in the atmosphere of HD 189733b with the HARPS spectrograph. *Astron. Astrophys.* **577**, A62 (2015).
49. Henry, G. W. Techniques for automated high-precision photometry of Sun-like stars. *Publ. Astron. Soc. Pacif.* **111**, 845–860 (1999).
50. Isaacson, H. & Fischer, D. Chromospheric activity and jitter measurements for 2630 stars on the California Planet Search. *Astrophys. J.* **725**, 875–885 (2010).
51. Knutson, H. A., Howard, A. W. & Isaacson, H. A correlation between stellar activity and hot Jupiter emission spectra. *Astrophys. J.* **720**, 1569–1576 (2010).
52. Lockwood, G. W. *et al.* Patterns of photometric and chromospheric variation among sun-like stars: a 20 year perspective. *Astrophys. J.* **171**, 260–303 (2007).
53. Helling, Ch., Woitke, P. & Thi, W.-F. Dust in brown dwarf and extra-solar planets I. Chemical composition and spectral appearance of quasi-static cloud layers. *Astron. Astrophys.* **485**, 547–560 (2008).
54. Liang, M.-C. *et al.* On the insignificance of photochemical hydrocarbon aerosols in the atmospheres of close-in extrasolar giant planets. *Astrophys. J.* **605**, L61–L64 (2004).
55. Moses, J. I. *et al.* Disequilibrium carbon, oxygen, and nitrogen chemistry in the atmospheres of HD 189733b and HD 209458b. *Astrophys. J.* **737**, 15 (2011).



**Extended Data Figure 1** |  $\Delta Z_{J-LM}$  versus  $\Delta Z_{UB-LM}$ . Black points show the altitude difference between the near-infrared (near-IR) and the mid-infrared (mid-IR) spectral features ( $\Delta Z_{J-LM}$ ) versus the difference between the blue-optical and mid-infrared ( $\Delta Z_{UB-LM}$ , see Table 1). Error bars represent the  $1\sigma$  measurement uncertainties. Purple and grey

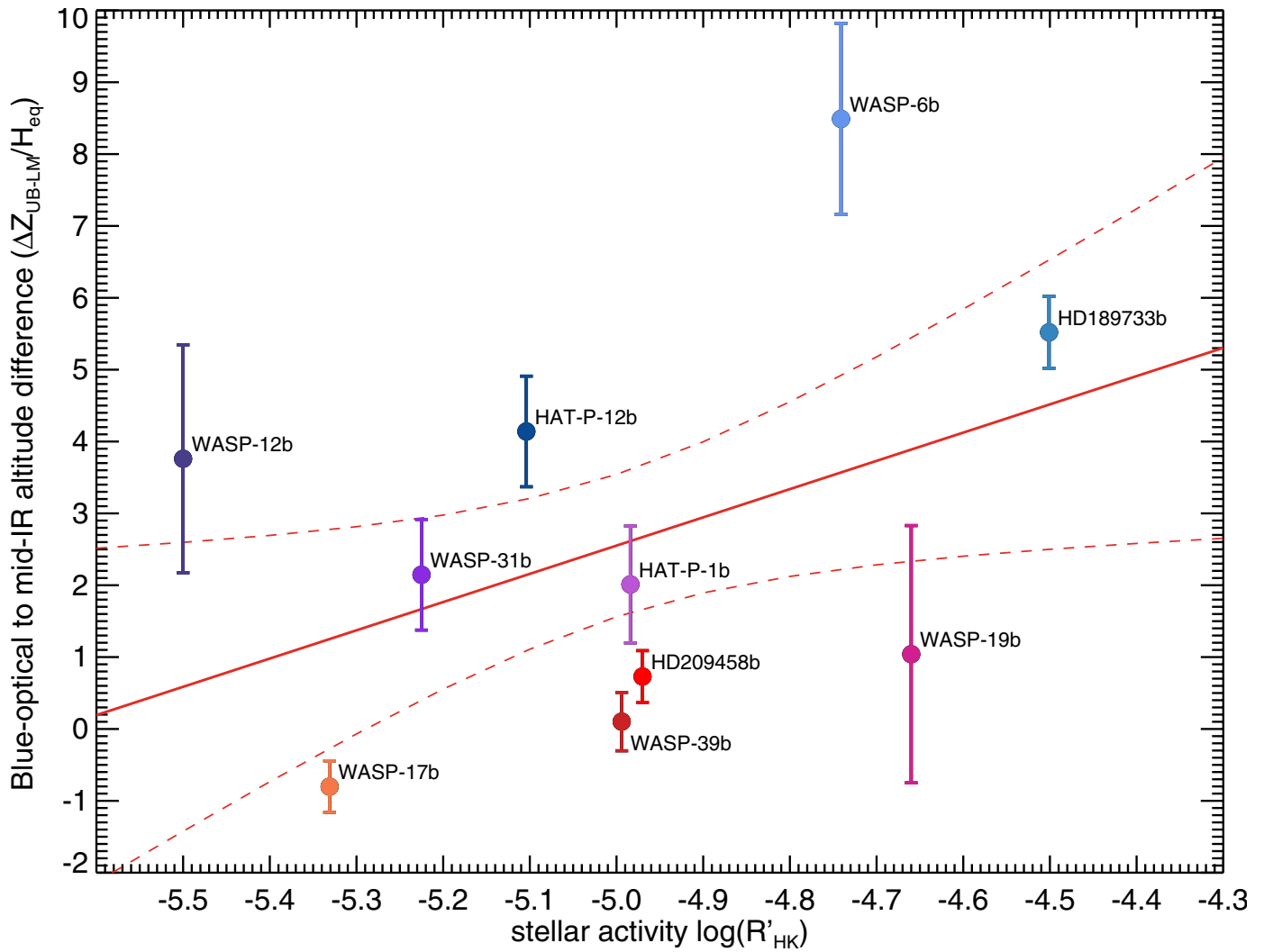
lines show model trends for hazy and cloud atmospheres, respectively, with increasing Rayleigh scattering haze and grey cloud deck opacity corresponding to  $10\times$ ,  $100\times$  and  $1,000\times$  solar. We also show clear-atmosphere models with sub-solar abundances of  $0.1\times$ ,  $0.01\times$  and  $0.001\times$  solar (red line).





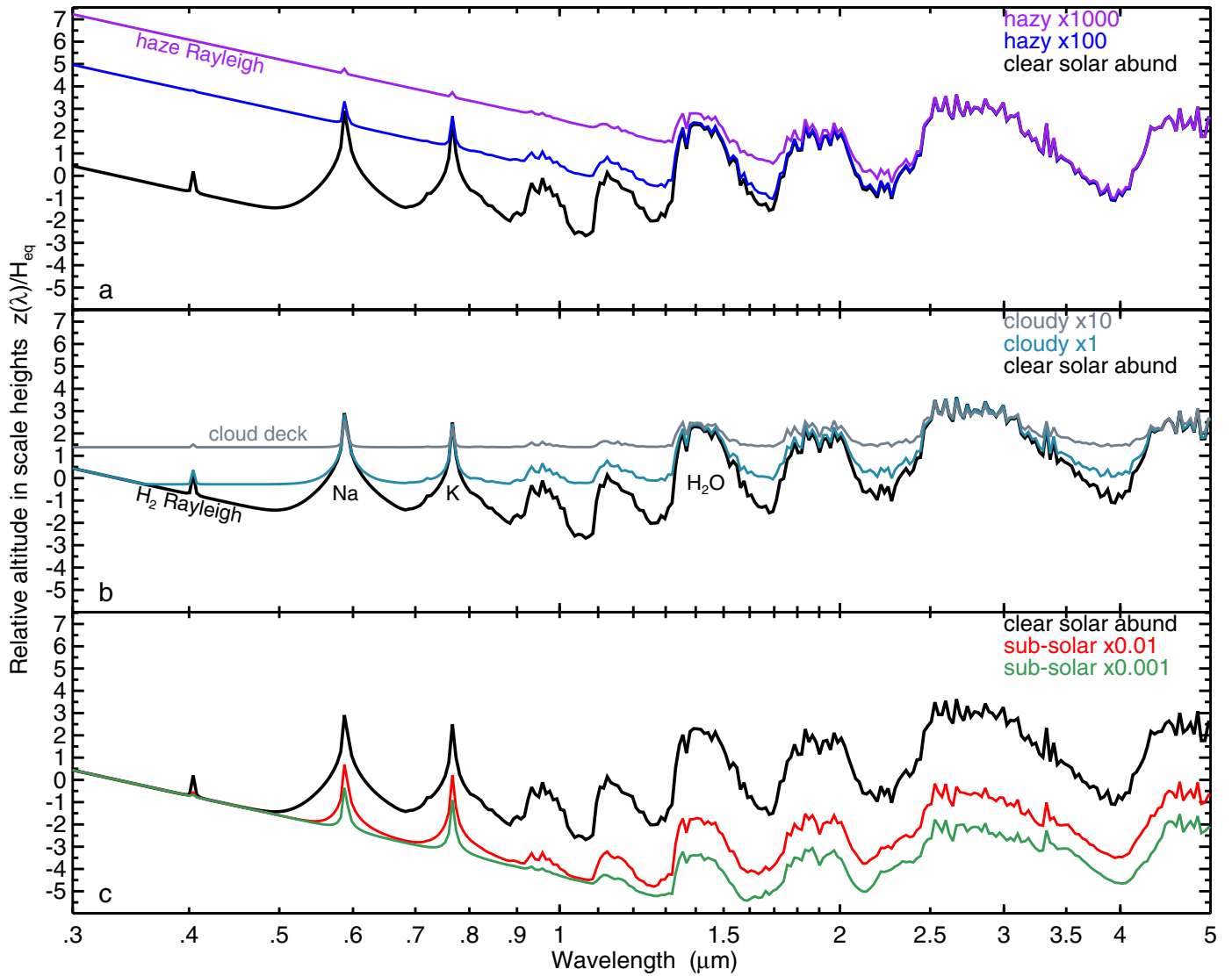
**Extended Data Figure 2 |  $\Delta Z_{\text{UB-LM}}$  index versus H<sub>2</sub>O amplitude.** Black points show the altitude difference between the blue-optical and mid-infrared (mid-IR) spectral features ( $\Delta Z_{\text{UB-LM}}$ ) versus the amplitude of the 1.4- $\mu\text{m}$  H<sub>2</sub>O absorption spectral feature (see Table 1). Error bars represent the  $1\sigma$  measurement uncertainties. Purple and grey lines show

model trends for hazy and cloud atmospheres, respectively, with increasing Rayleigh scattering haze and grey cloud deck opacity corresponding to  $10\times$ ,  $100\times$  and  $1,000\times$  solar. We also show clear-atmosphere models with sub-solar abundances of  $0.1\times$ ,  $0.01\times$  and  $0.001\times$  solar (red line).



**Extended Data Figure 3 | Stellar activity ( $\log R'_{HK}$ ) versus  $\Delta Z_{UB-LM}$  index.** Exoplanets with strong haze signatures have prominent optical slopes with  $\Delta Z_{UB-LM}$  values above 3, while clear atmospheres have

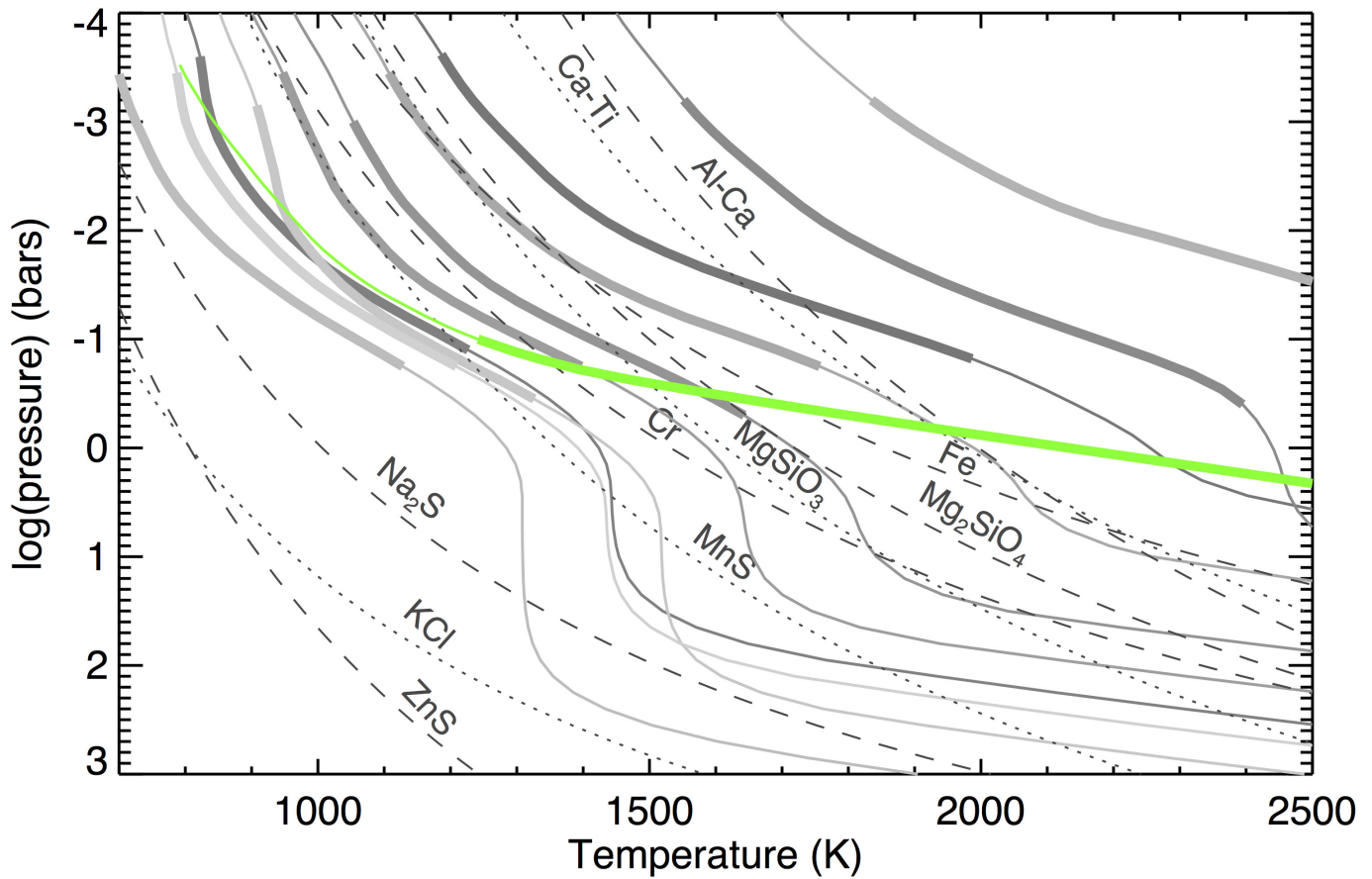
$\Delta Z_{UB-LM}$  indices near zero. The datapoint colours correspond to those in Fig. 1. The red solid line shows the linear regression between the two indices, with  $1\sigma$  uncertainties (red dashed lines).



**Extended Data Figure 4 | Theoretical model transmission spectra.**

Model spectra<sup>17,39</sup> assume a 1,200-K hot Jupiter with a surface gravity of  $25 \text{ m s}^{-2}$ . Spectra in each panel are compared to a clear, solar-metallicity atmosphere (black line). **a**, Purple spectra have an added Rayleigh

scattering haze corresponding to metallicities of  $100\times$  and  $1,000\times$  solar. **b**, Blue and grey spectra have an added grey cloud deck corresponding to  $1\times$  and  $10\times$  solar. **c**, Red and green spectra show clear atmospheres with sub-solar abundances of  $0.01\times$  and  $0.001\times$  solar.



**Extended Data Figure 5 | Brown dwarf and hot Jupiter pressure-temperature profiles and condensation curves.** Similar to Fig. 2, but alongside the ten hot-Jupiter pressure-temperature profiles we plot the profile of an 1,800-K brown dwarf (green line). The thicker portions of the lines indicate the pressures probed in transmission for the hot Jupiters

(plotted in greyscale) and the visible photosphere for the brown dwarf (0.1–10 bar). While a shift in the pressure-temperature profile of a hot Jupiter to hotter and cooler temperatures could dramatically change which condensates may be found in the visible atmosphere, the same would not be true for much shallower brown dwarf pressure-temperature profiles.

Extended Data Table 1 | Summary of observations

Planet	V mag.	Optical <i>HST</i> STIS, ACS 0.3 – 1 $\mu\text{m}$ grating, Date (UT)	near-IR <i>HST</i> WFC3 1.1 – 1.7 $\mu\text{m}$ grism, Date (UT)	mid-IR <i>Spitzer</i> IRAC 3 – 5.2 $\mu\text{m}$ band, Date (UT)
HAT-P-1b	9.87	G430L, 2012/05/26 G750L, 2012/05/30 G430L, 2012/09/19	G141, 2012/07/05	3.6, 2013/09/11 4.5, 2013/09/20
WASP-6b	11.91	G430L, 2012/06/10 G430L, 2012/06/16 G750L, 2012/07/23	—	4.5, 2013/01/14 3.6, 2013/01/21
WASP-12b	11.57	G430L, 2012/03/14 G430L, 2012/03/27 G750L, 2012/09/09	G141, 2011/04/12	3.6, 2010/11/17 4.5, 2010/12/11
WASP-31b	11.98	G430L, 2012/06/13 G430L, 2012/06/26 G750L, 2012/07/10	G141, 2012/05/13	3.6, 2013/09/13 4.5, 2013/03/19
HAT-P-12b	12.84	G430L, 2012/04/11 G430L, 2012/04/30 G750L, 2013/02/04	G141, 2011/05/29	3.6, 2013/03/08 4.5, 2013/03/11
WASP-19b	12.59	G430L, 2012/04/30 G430L, 2012/05/04 G750L, 2012/05/09	G141, 2011/07/01 G141, 2014/06/12	3.6, 2011/08/03 4.5, 2011/08/13
WASP-39b	12.09	G430L, 2013/02/08 G430L, 2013/02/12 G750L, 2013/03/17	—	3.6, 2013/04/18 4.5, 2013/10/10
WASP-17b	11.83	G430L, 2012/06/08 G430L, 2013/03/15 G750L, 2013/03/19	G141, 2011/07/08	4.5, 2013/05/10 3.6, 2013/05/14
HD 209458b	7.63	G430L, 2003/05/03 G750L, 2003/05/31 G430L, 2003/06/25 G750L, 2003/07/05 G750M, 2000/04/25 G750M, 2000/04/28 G750M, 2000/05/05 G750M, 2000/05/12	G141, 2012/09/25	3.6, 2007/12/31 3.6, 2008/07/19 3.6, 2011/01/14 3.6, 2014/01/19 4.5, 2008/07/22 4.5, 2010/01/19
HD 189733b	7.648	G800L, 2006/05/22 G800L, 2006/05/26 G800L, 2006/07/14 G430L, 2009/11/20 G430L, 2010/05/18 G750M, 2009/10/30 G750M, 2009/11/13 G750M, 2010/09/30 G750M, 2010/11/29	G141, 2013/06/05	3.6, 2007/11/25 3.6, 2006/10/30 3.6, 2010/12/29 4.5, 2007/11/22 4.5, 2009/12/23

Transit observations using the Hubble and Spitzer Space Telescopes. Dates are given in universal time (UT) listed along with the instruments and wavelength ranges used.