

M31's intriguing nucleus

Hubble telescope observations have yielded insights into the Andromeda Galaxy's (M31's) complex nucleus. New images from Hubble uncovered a disk of young, hot, blue stars swirling around a supermassive black hole. The disk is nested inside an elliptical ring of older, cooler, red stars, seen in previous Hubble observations. The inset images show M31's bright core and a view of the entire galaxy.

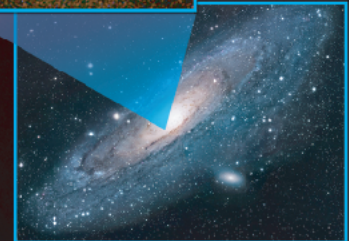
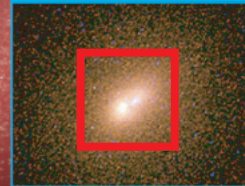
Ring of older, cooler, red stars

Supermassive black hole

Disk of young, hot, blue stars

Concentration of red stars

M31 nucleus
(HST image)



M31 image: R. Gendler