



Advanced Electron Microscopy Center (AEMC)

PI: Elena Dobrica/University of Hawaii at Manoa

Website: <http://www.soest.hawaii.edu/AEMC/>

Description of Facility

- AEMC is a service facility at the University of Hawai'i at Mānoa that provides sample preparation and electron and ion microscopy imaging and analysis to the scientist at UH as well as other research institutions in the North Pacific region, across the United States (US), and internationally.
- SEM – FEI Helios NanoLab 660
- TEM – FEI Titan3 G2 60-300
- Time available to the community: 60%
- Type of access available: in person
- Restrictions on access: accessible to all qualified, independent researchers. No facility personnel available.

How to use the facility

- Access solicited via email.
- The requests for instrument access will be reviewed by the PI for safety, feasibility, and relevance to PSD programs.
- No special access requirements are needed for the AEMC facility. Investigators persuading research relevant to PSD-funded studies will have the priority for access.
- \$85 for SEM, \$110 for FIB, and \$160 for TEM per hour.

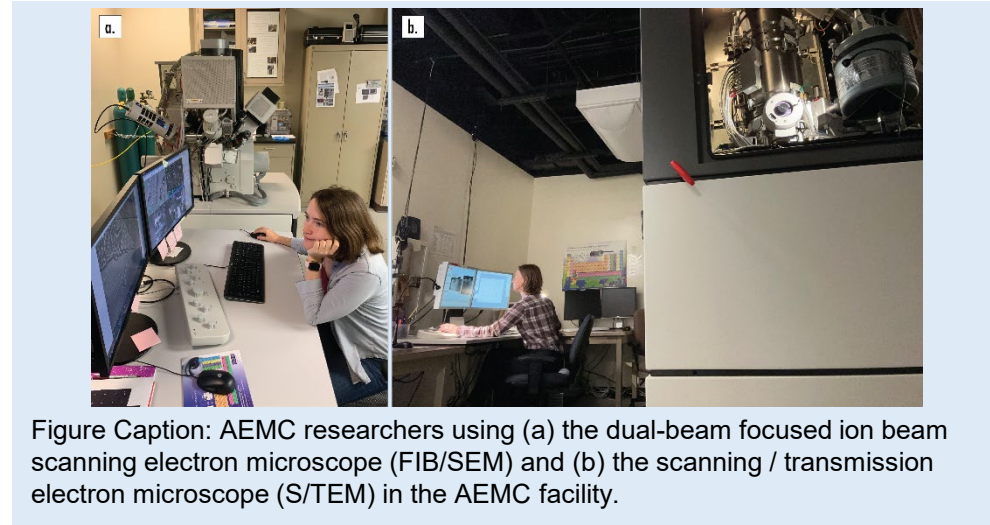


Figure Caption: AEMC researchers using (a) the dual-beam focused ion beam scanning electron microscope (FIB/SEM) and (b) the scanning / transmission electron microscope (S/TEM) in the AEMC facility.

Contact information:

- The AEMC is located in Room 08 of the Pacific Ocean Sciences and Technology (POST) building (below) on the University of Hawai'i at Mānoa campus.
- Address: University of Hawai'i at Mānoa, 1680 East-West Rd., POST 008, Honolulu, HI 96822
- Email: dobrica@hawaii.edu
- Phone: (808) 956-5370