



Jet Propulsion Laboratory
California Institute of Technology

Exoplanet Exploration Program (ExEP) Office

Dr. Dawn Gelino, Program Manager
Jet Propulsion Laboratory
California Institute of Technology

January 3, 2026

ExoPAG 33, Phoenix, AZ

© 2024 All rights reserved CL#25-4911

Artist concept of Kepler-16b

Supporting:

- The Scientific Community**
- The Ongoing Exoplanet Program**
- Exoplanet Missions**



Community Engagement & Communications

ExoPAG, Science Gap List, ExoExplorers, ExoFOP, EPRV RCN, Public Engagement



Mission Concepts

Previous IR / O / UV Mission Concepts



Coronagraph

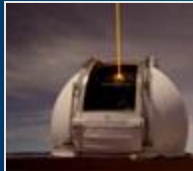


Starshade

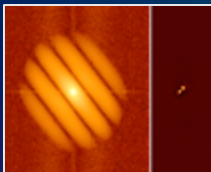
NASA Strategic & Mission Support



NN-EXPLORE

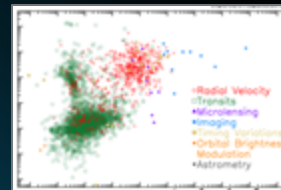


Keck Observatory



High Resolution Imaging

NASA Exoplanet Science Institute (NExSci)



Archives, Tools, Sagan Program, Professional Engagement, Ground-based Observing Support

Technology Development



Technology Gap Assessment, ExoTAC



Coronagraph & DM Technology Development


Why Should You Care About NASA's Exoplanet Exploration Program?

- We are an **interface** between the astronomical community (you!) and Exoplanet Astrophysics at NASA HQ
- We can **bring ideas to NASA** and turn them into reality:
 - New collaborations, new missions, new sources of funding
- How does ExEP help you? We:
 - Provide access to **instruments, telescopes, and data**;
 - Manage **high contrast imaging testbed facilities**;
 - Work on **technology development**;
 - Compile the community **science and technology gap lists**;
 - Provide **organizational support** for the community towards specific goals (ExoPAG, EPRV RCN, etc.);
 - Provide **educational opportunities** (Sagan Summer Workshop, PROTO);
 - Perform **mission studies** and trade studies
 - Support the **ExoPAG and its priorities**

NASA Exoplanet Exploration Program



Astrophysics Division, Science Mission Directorate

 = Changes since last ExoPAG



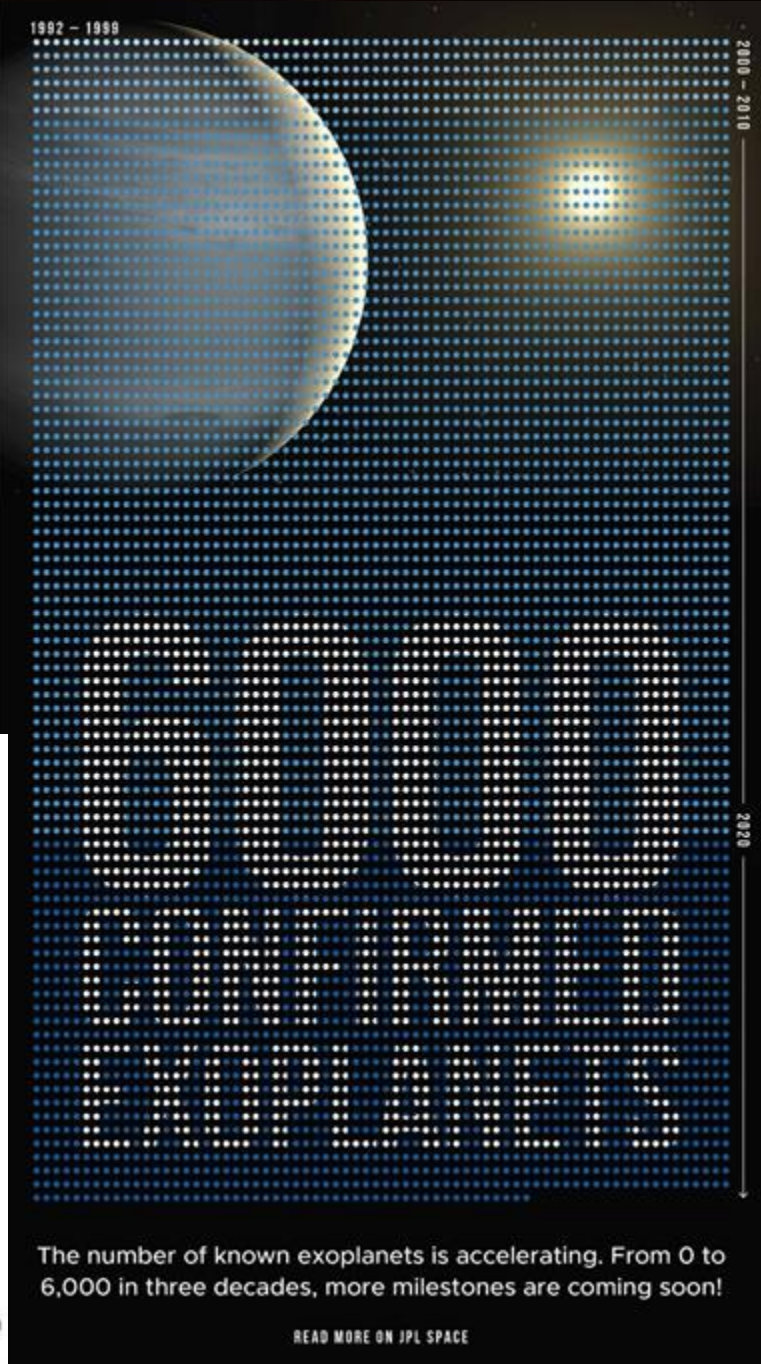
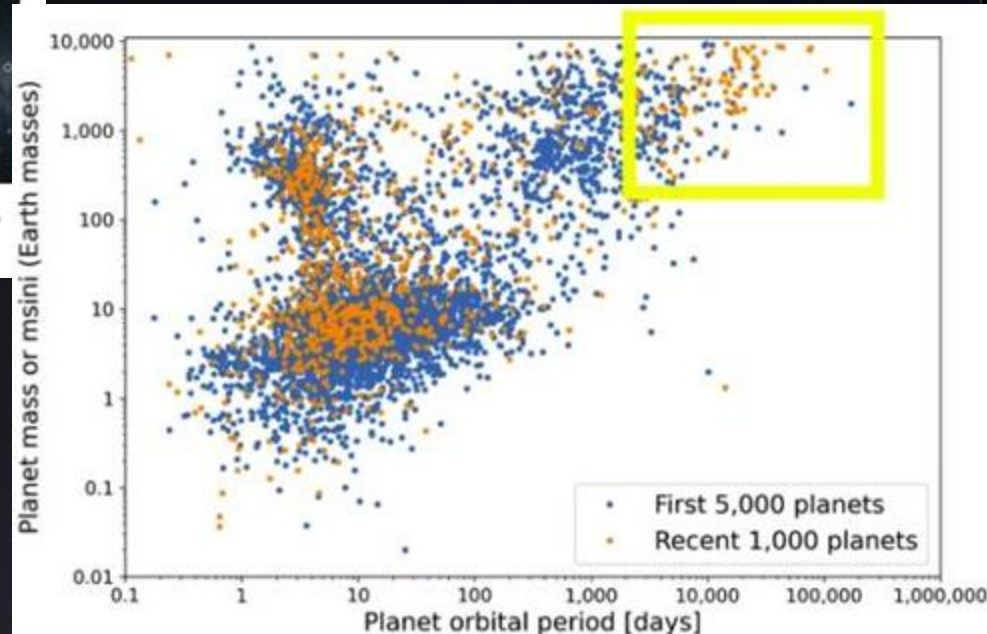
Community Achievement:

NASA's Tally of Planets Outside Our Solar System Reaches 6,000



It's been 30 years since the discovery of the first planet around another star like our Sun. With every new discovery, scientists move closer to answering whether there are other planets like Earth that could host life as we know it. NASA/JPL-Caltech

- 6,000+ Confirmed Exoplanets in 30 Years of Discovery



NASA HQ Website Migration

- New website URLs:

- Exoplanets information:
exoplanets.nasa.gov

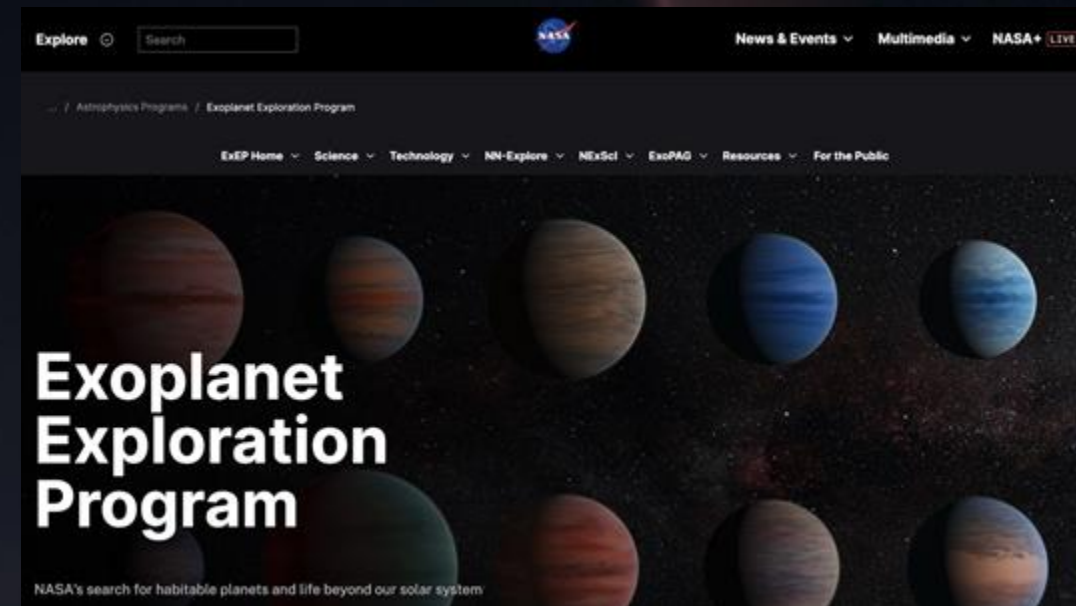


science.nasa.gov/exoplanets

- Program Office information:
exoplanets.nasa.gov/exep



science.nasa.gov/astrophysics/programs/exep/

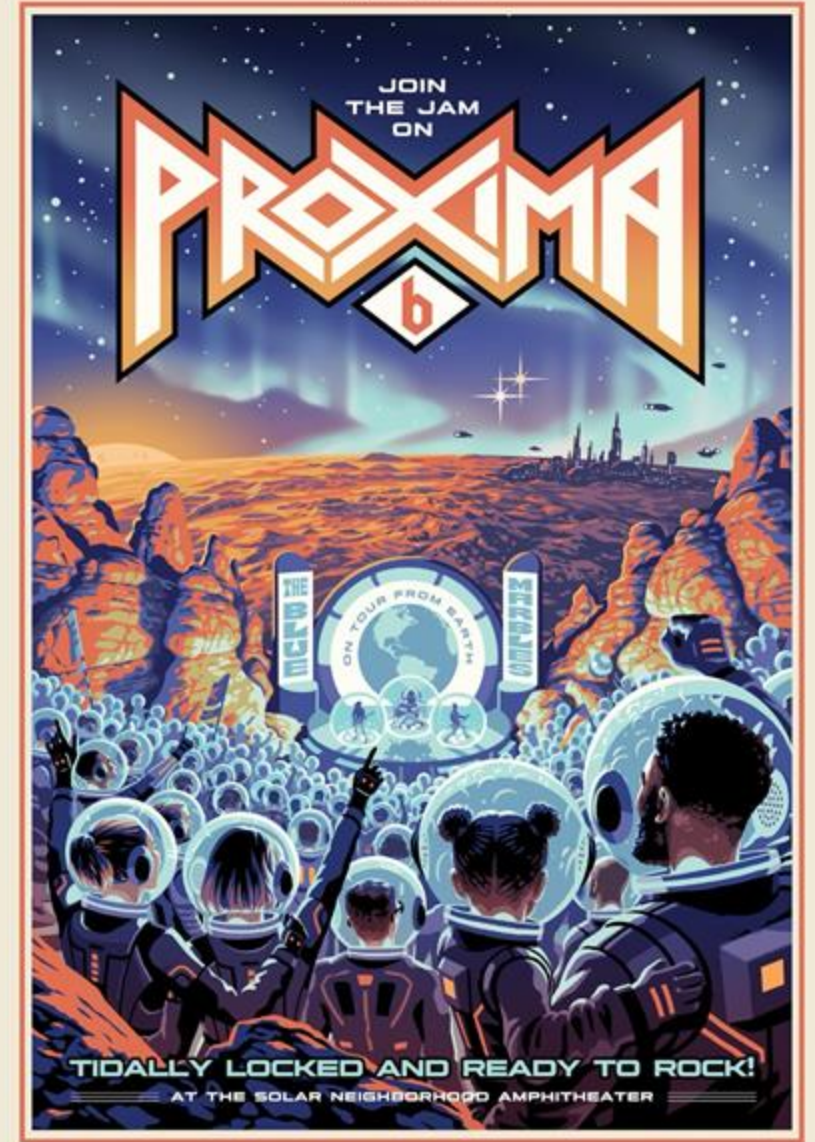


ExoComms

- At long last, to commemorate 30 years of exoplanets...

We have a new Exoplanet Travel Bureau Poster!!

(We will have them at the Exoplanet Exploration table at the NASA booth!)



Like Luke Skywalker's planet "Tatooine" in Star Wars, Kepler 16b orbits a pair of stars. Deceptively, it's a terrestrial planet, Kepler 16b might also be a gas giant like Saturn. Prospects for life on this unusual world aren't good, as it has a temperature similar to that of dry ice. But the discovery indicates that the movie's iconic double sunset is anything but science fiction.

NASA's Exoplanet Exploration Program, Jet Propulsion Laboratory, Pasadena, CA
www.nasa.gov

Science and Public Engagement

Building our Community

- **Professional Tools & Opportunities (PROTO) Workshop:**
 - Sagan Summer Workshop companion on careers, working with NASA, decadal process, etc.
 - Registration open for PROTO 2026 on February 2
- **ExoExplorers Program:**
 - Sponsored by the ExoPAG and ExEP
 - Enables the professional development of exoplanet PhD candidates and/or postdocs
 - No 2026 cohort, but planning for 2027!
- **Wavelengths:**
 - EPRV RCN that facilitates small-group conversations across career stages, areas of expertise, and instrument teams to lower the barrier to meaningful professional relationships and shared scientific insight

Making Exoplanets Accessible to All

- Presence at Comic-Con, SXSW, & in popular media



ExEP/NExSci Observing & Data Opportunities

- NASA-NSF Exoplanet Observational Research Program (NN-EXPLORE): Guest Observing Opportunities
 - NEID Spectrograph on 3.5m Kitt Peak WIYN telescope (40 nights)
 - High Resolution Speckle Imaging of exoplanet host stars at WIYN, Gemini-North and South
 - NExSci is the Science Center that processes and archives the data
- Extreme Precision Radial Velocity
 - Research Coordination Network organizes seminars, workshops and advances the field: 220+ members and open to anyone - Join here: <https://tinyurl.com/4er6ht74>
 - Solar data archived

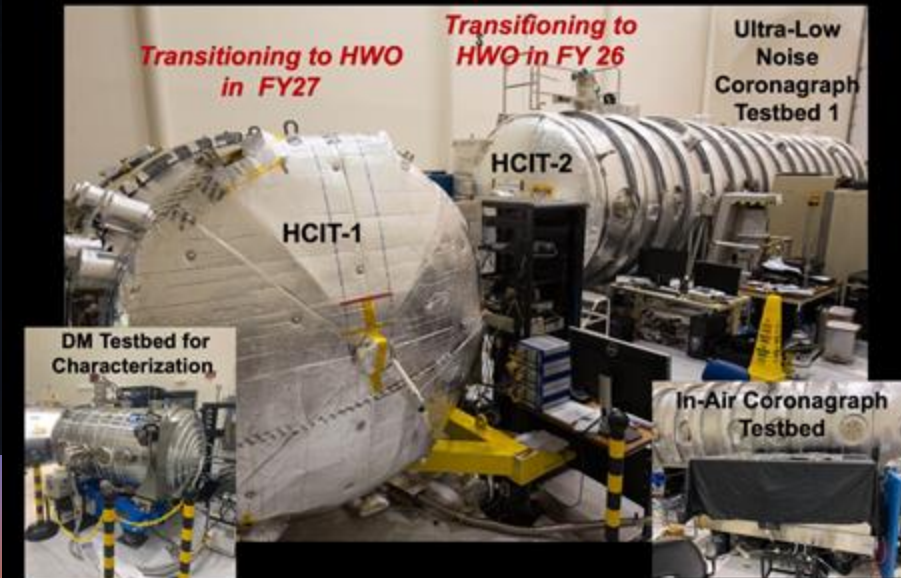


Other ExEP Highlights



- Engineering
 - Rashied Amini is the new ExEP Chief Engineer. Please reach out if:
 - You are interested in participating in architecture studies for mass measurement using astrometry or are interested in developing a mission concept study
- Technology
 - Emerging Technologies
 - Technosignature Study
 - Manage the HCIT Facility for NASA and it's programs
- Science
 - Gap list
 - Mass Measurement Workshop
- NExSci
 - NASA Keck time
 - Sagan Summer Workshop
 - Exoplanet Archive and ExoFOP

High Contrast Imaging Testbed Facility at JPL





ExEP is here to support
YOU to advance the field
of exoplanets!



Jet Propulsion Laboratory
California Institute of Technology

exoplanets.nasa.gov

Acknowledgements

This work was carried out at the **Jet Propulsion Laboratory,**
California Institute of Technology under contract with the
National Aeronautics and Space Administration.

© 2024. All rights reserved.

- ExEP is located at JPL

- Our Science Center, NExSci, is located on the Caltech campus

